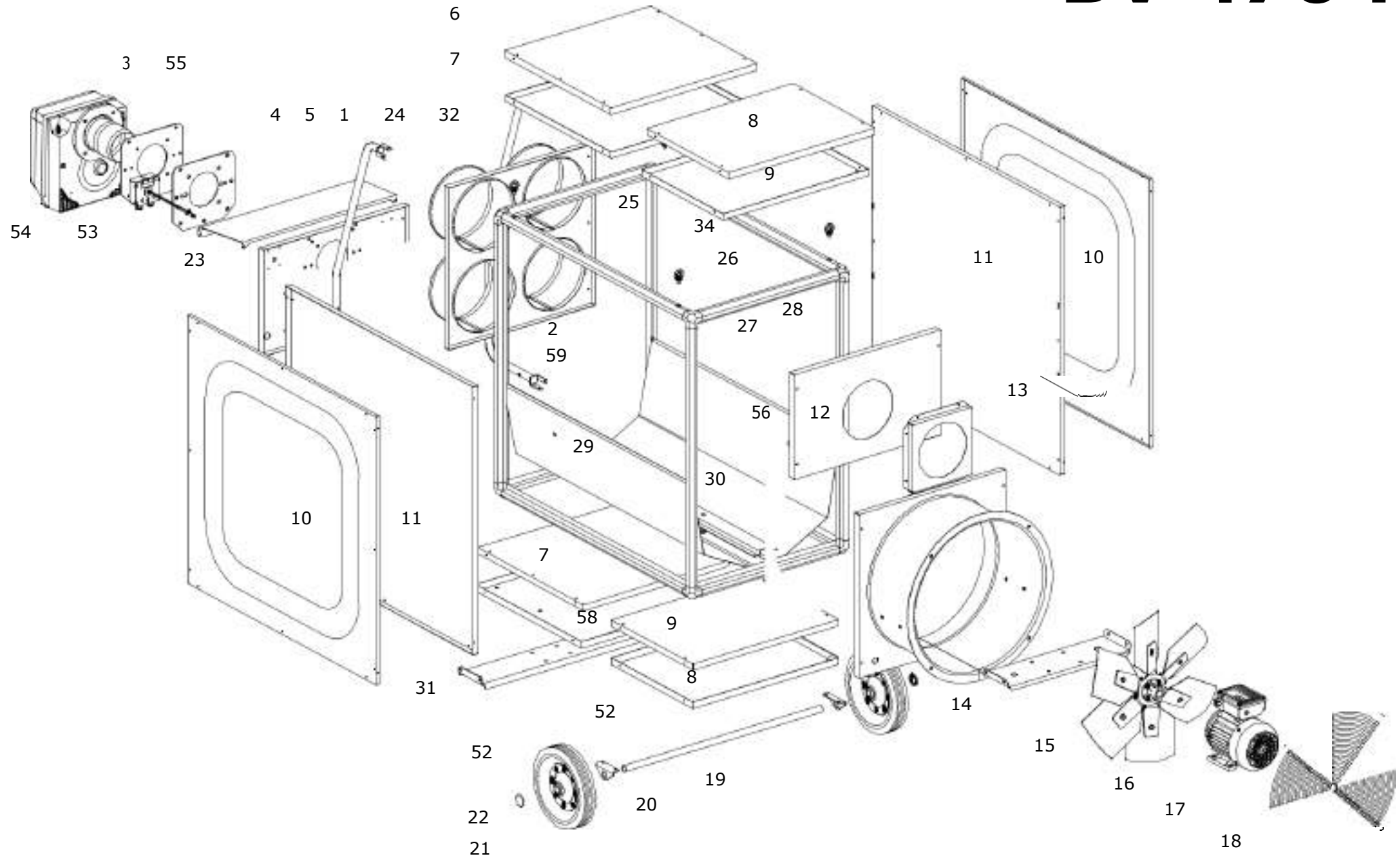
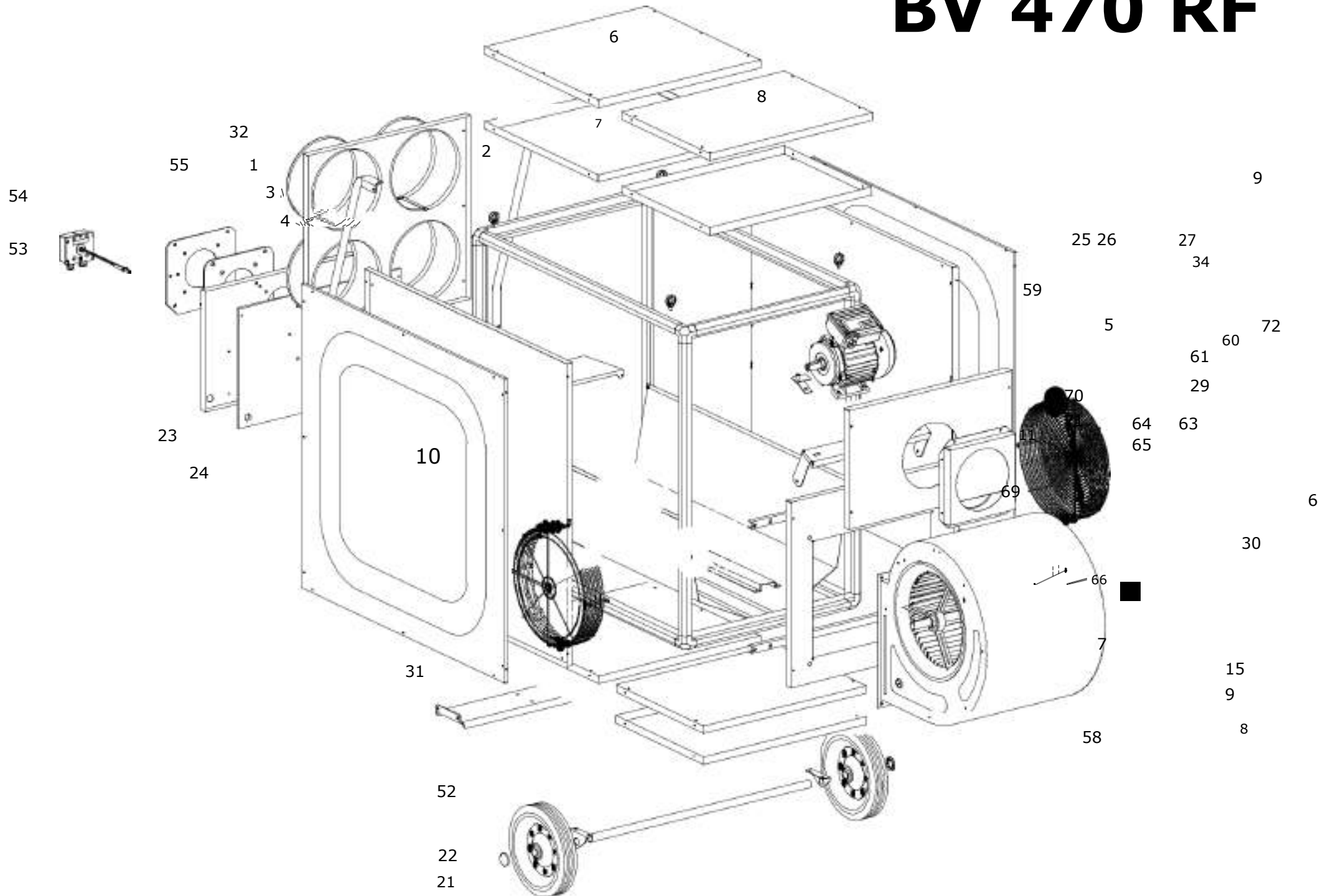


BV 470 F

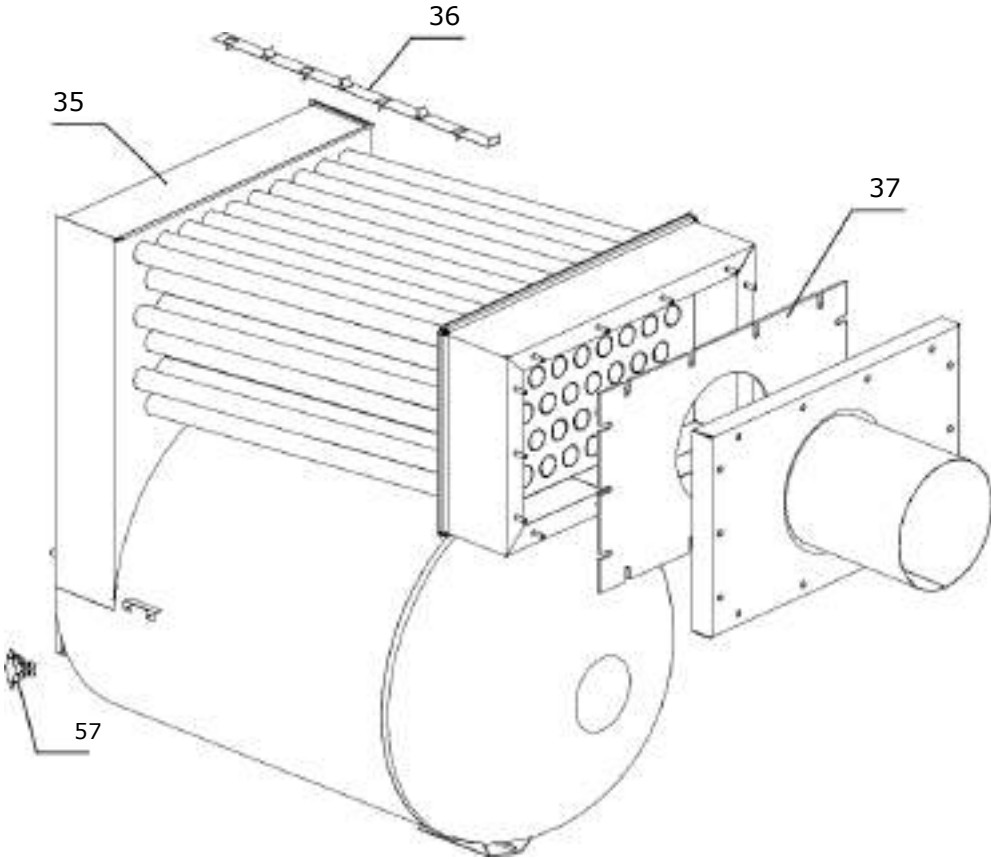


BV 470 RF

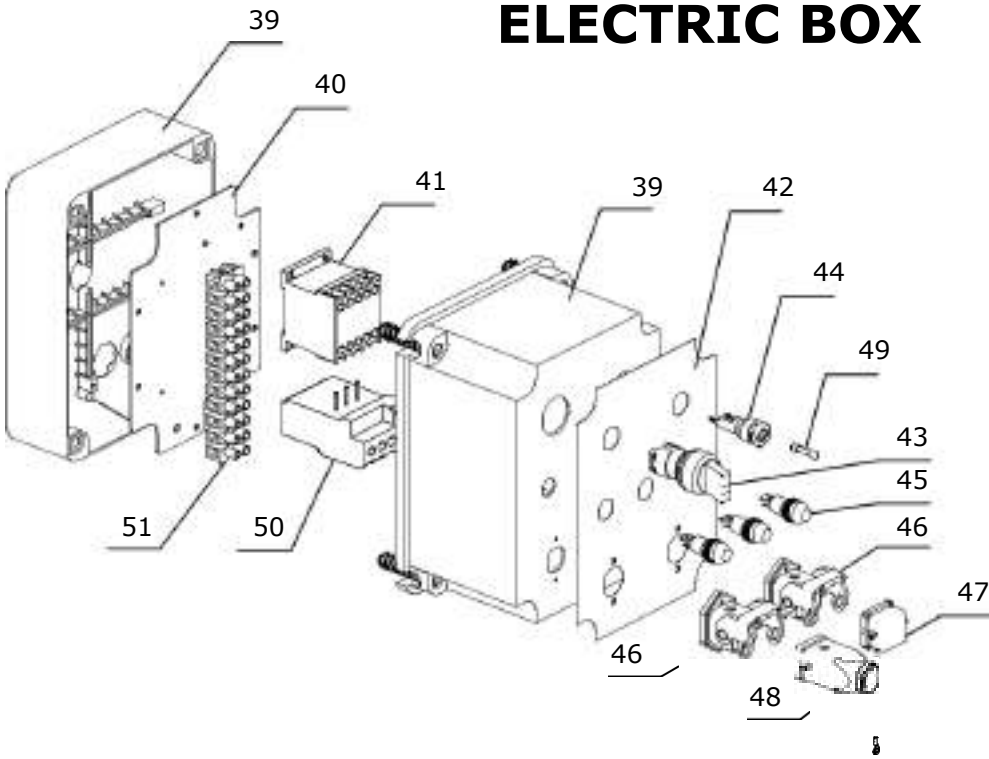


COMBUSTION CHAMBER

BV 470 F / BV 470 RF



ELECTRIC BOX



MASTER HIGH OUTPUT INDIRECT HEATERS BV 470 F / BV 470 RF

Pos.	Description	BV 470 F	BV 470 RF
1	Right Burner Protection	4514.144	4514.144
2	Left Burner Protection	4514.143	4514.143
3	Universal Slab	4514.126	4514.126
4	Universal Slab Seal	4514.605	4514.605
5	Burner Cover	S/R	S/R
6	Top Bottom External Panel	S/R	S/R
7	Top Internal Panel	S/R	S/R
8	Top External Panel	S/R	S/R
9	Bottom External Panel	S/R	S/R
10	External Lateral Panel	S/R	S/R
11	Internal Lateral Panel	S/R	S/R
12	Rear Panel	S/R	S/R
13	Chimney Bottom	S/R	S/R
14	Fan Panel	S/R	S/R
15	Support Bracket	S/R	S/R
16	Fan	4514.301	4514.312
17	Motor	4514.300	4517.301
18	Protection Grill	4514.142	-
19	Wheels Axle	4514.150	4514.150
20	Hub Bracket	4514.128	4514.128
21	Black Rubber Wheel Diam. 300	4514.600	4514.600
22	Fixing Washer For Shaft With Cup	4514.803	4514.803
23	Front Panel Slab	S/R	S/R
24	Burner Thermic Insulator	4514.604	4514.604
25	Chamfered Profile For Panel 25 L=605	S/R	S/R
26	Chamfered Profile For Panel 25 L=1060	S/R	S/R
27	Chamfered Profile For Panel 25 L=994,5	S/R	S/R
28	3 Way Corner For Chamfered Profile	S/R	S/R
29	Air Direction Sheet	S/R	S/R
30	Combustion Chamber Bracket	S/R	S/R
31	Wheels Bracket	S/R	S/R
32	4-Way Panel	4514.117	4514.117
32	1-Way Panel (Optionally)	4514.097	4514.097
34	Lifting Eye Bolt M8	4514.801	4514.801
35	Combustion Chamber	4514.151	4514.151
36	Bracket For Turbulence	4514.105	4514.105
37	Exit Smoke Chamber Seal	4514.602	4514.602
39	Waterprof Case (Front And Back)	4514.609	4514.609
40	Electric Components Plate	4514.141	4514.141
41	Thermal Relay 7-10A	4514.408	4514.408
42	Panels Label	4514.512	4514.512
43	Switch 3P	4514.402	4514.402
44	Fuseholder 5X20, 6,3A	4514.400	4514.400
45	Indicator Light 230V	4514.401	4514.401
46	Socket Case	4514.611	4514.611
47	Cap For Thermostat Plug	4162.467	4162.467
48	Thermostat Plug	4111.118	4111.118

MASTER HIGH OUTPUT INDIRECT HEATERS BV 470 F / BV 470 RF

Pos.	Description	BV 470 F	BV 470 RF
49	Fuse 5X20 3,15A 250V	4514.409	4514.409
50	Contactor 3Kw 400V	4514.407	4514.407
51	Terminal Block 12T 4 ²	4514.404	4514.404
52	Front Base Panel	S/R	S/R
53	Fan Limit Double Thermostat	4514.410	4514.410
54	Oil Burner RG3 F	4514.302	4514.302
55	Oil Pre Heater	4031.120	4031.120
56	Flange	S/R	S/R
57	Overheat Thermostat	4031.047	4031.047
58	Bottom External Panel I	S/R	S/R
59	Holder	4514.213	4514.213
60	Self-Aligning Foot M8X43	-	4517.129
61	Footrest	-	4517.117
62	Motor Support	-	4517.116
63	V-Belt Spz 1180Mm	-	4514.306
64	Taper Bush	-	4517.132
65	Belt Pulley	-	4514.307
66	Taper Bush	-	4517.133
67	Belt Pulley	-	4514.308
68	Protection Grill I	-	4514.215
69	Protection Grill II	-	4514.216
70	Belt Transmission Guard	-	4514.273
71	Belt Guard Cover	-	4514.274
72	Motor Support	-	4517.115

S/R = Parts available by special request only

WWW.SERVISCENTRUM.CZ

[+420 607 607 077](tel:+420607607077)

info@serviscentrum.cz