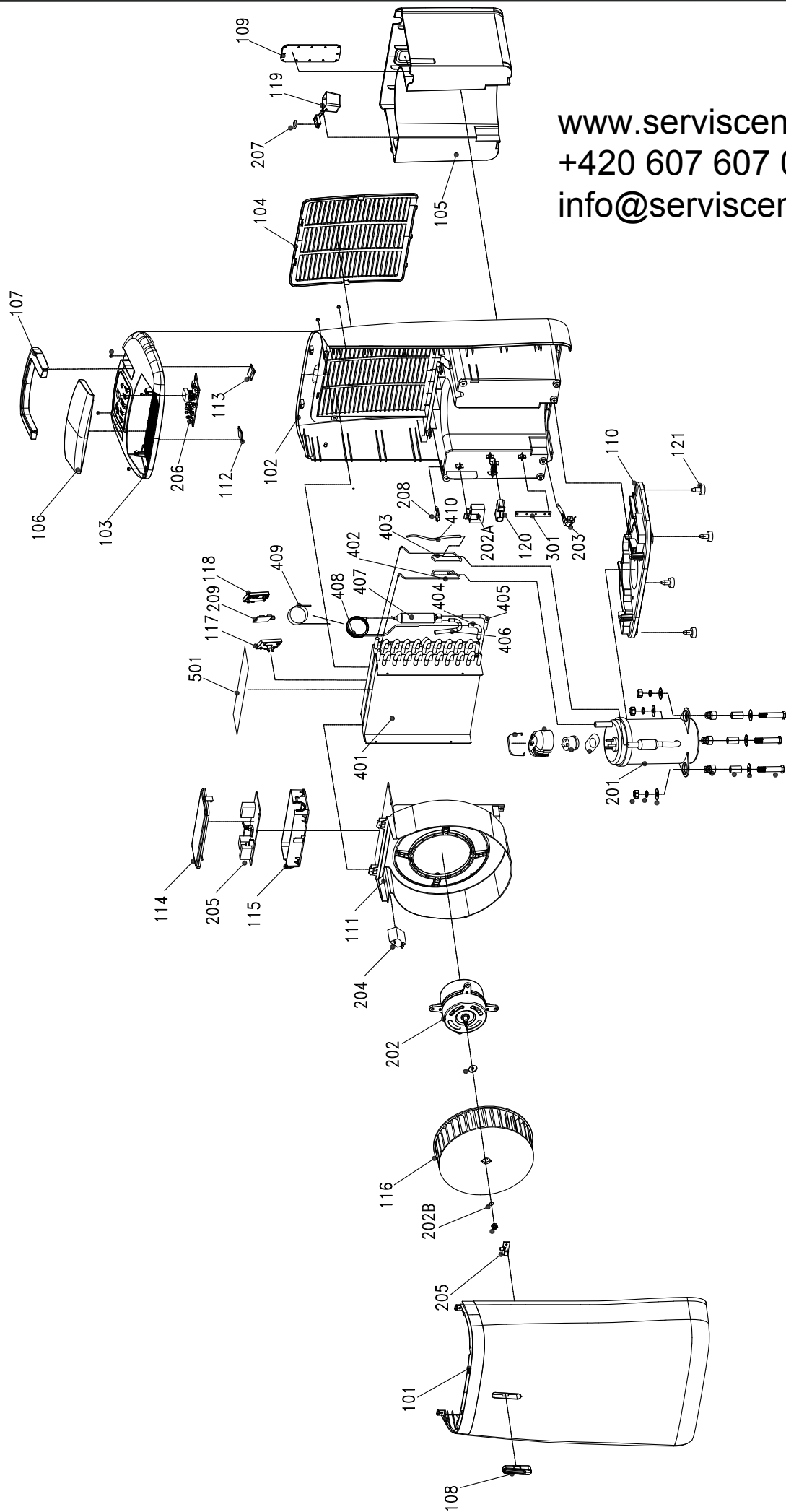


Edizione 2014  
Rev. A

[www.serviscentrum.cz](http://www.serviscentrum.cz)  
+420 607 607 077  
[info@serviscentrum.cz](mailto:info@serviscentrum.cz)



| Key no.   | Part no. | Description                      | q'ty |
|-----------|----------|----------------------------------|------|
| 101       | 4512.869 | Front Panel                      | 1    |
| 102       | 4512.881 | Rear Panel                       | 1    |
| 103       | 4512.890 | Top Cover                        | 1    |
| 104       | 4512.865 | Filter                           | 1    |
| 105       | 4512.894 | Water Tank                       | 1    |
| 106       | 4512.851 | Air Deflector                    | 1    |
| 107       | 4512.870 | Handle                           | 1    |
| 108       | 4512.860 | Cover For Light Indicator        | 1    |
| 109       | 4512.893 | Water Level Display              | 1    |
| 110       | 4512.853 | Bottom Base                      | 1    |
| 111       | 4512.852 | Air Outlet                       | 1    |
| 112       | 4512.872 | Left Mat For Top Cover           | 1    |
| 113       | 4512.883 | Right Mat For Top Cover          | 1    |
| 114       | 4512.891 | Top Cover For Main P.C. Board    | 1    |
| 115       | 4512.854 | Bottom Cover For Main P.C. Board | 1    |
| 116       | 4512.864 | Fan Blade                        | 1    |
| 117       | 4512.855 | Bottom Cover For Sensor          | 1    |
| 118       | 4512.892 | Top Cover For Sensor             | 1    |
| 119       | 4512.816 | Float                            | 1    |
| 120       | 4512.888 | Supporter For Wires Fixing       | 1    |
| 121       | 4512.827 | Foot Stand                       | 4    |
| 201       | N/A      | Compressor                       | 1    |
| 202       | 4512.877 | Motor                            | 1    |
| 202A      | 4512.878 | Motor Capacitor                  | 1    |
| 202B      | 4512.879 | Motor Gasket                     | 1    |
| 203       | 4512.880 | Power Cord                       | 1    |
| 204       | 4512.858 | Compressor Capacitor             | 1    |
| 205       | 4512.875 | Main P.C. Board                  | 1    |
| 206       | 4512.871 | Indicator P.C.Board              | 1    |
| 207       | 4512.873 | Magnet                           | 1    |
| 208       | 4512.124 | Magnetic Switch                  | 1    |
| 209       | 4512.884 | Sensor                           | 1    |
| 301       | 4512.876 | Metal Washer For Earth           |      |
| 401       | N/A      | Cool & Heat Exchanger            | 1    |
| 402       | 4512.861 | Discharging Tube                 | 1    |
| 403       | 4512.886 | Suction Tube                     | 1    |
| 404       | 4512.887 | Suction Tube For Evaporator      | 1    |
| 405       | 4512.862 | Discharging Tube For Condensor   | 1    |
| 406       | 4512.882 | Refrigerant Charging Tube        | 1    |
| 407       | 4512.863 | Dryer                            | 1    |
| 408       | 4512.856 | Capillary                        | 1    |
| 409       | 4512.885 | Sheath For Capillary             | 1    |
| 410       | 4512.889 | Thermal Sheath                   | 1    |
| 501       | 4512.867 | Foam For Water Resist            | 1    |
| not shown | 4512.850 | Active Carbon Filter             | 1    |

N/A = Parts not available