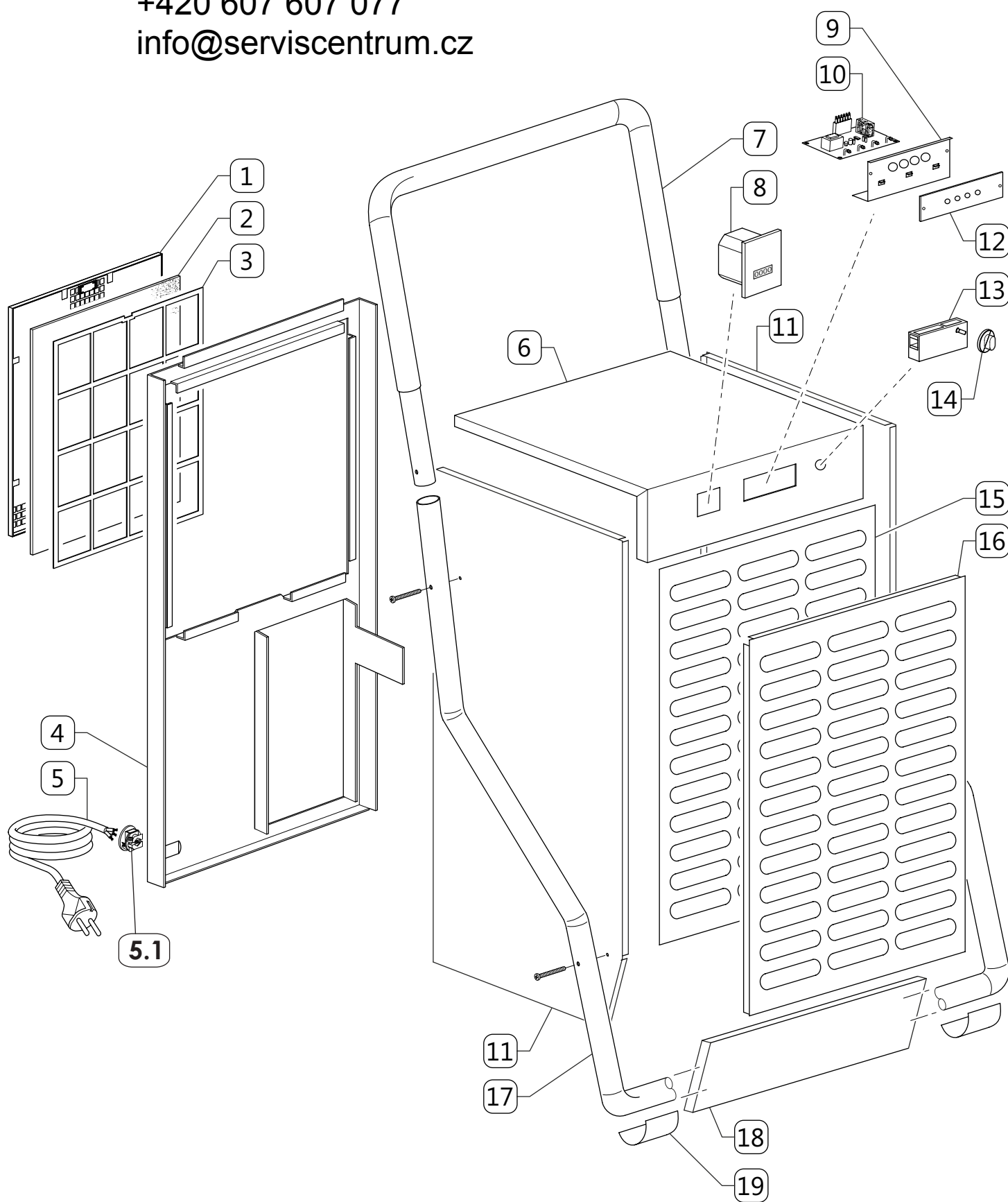
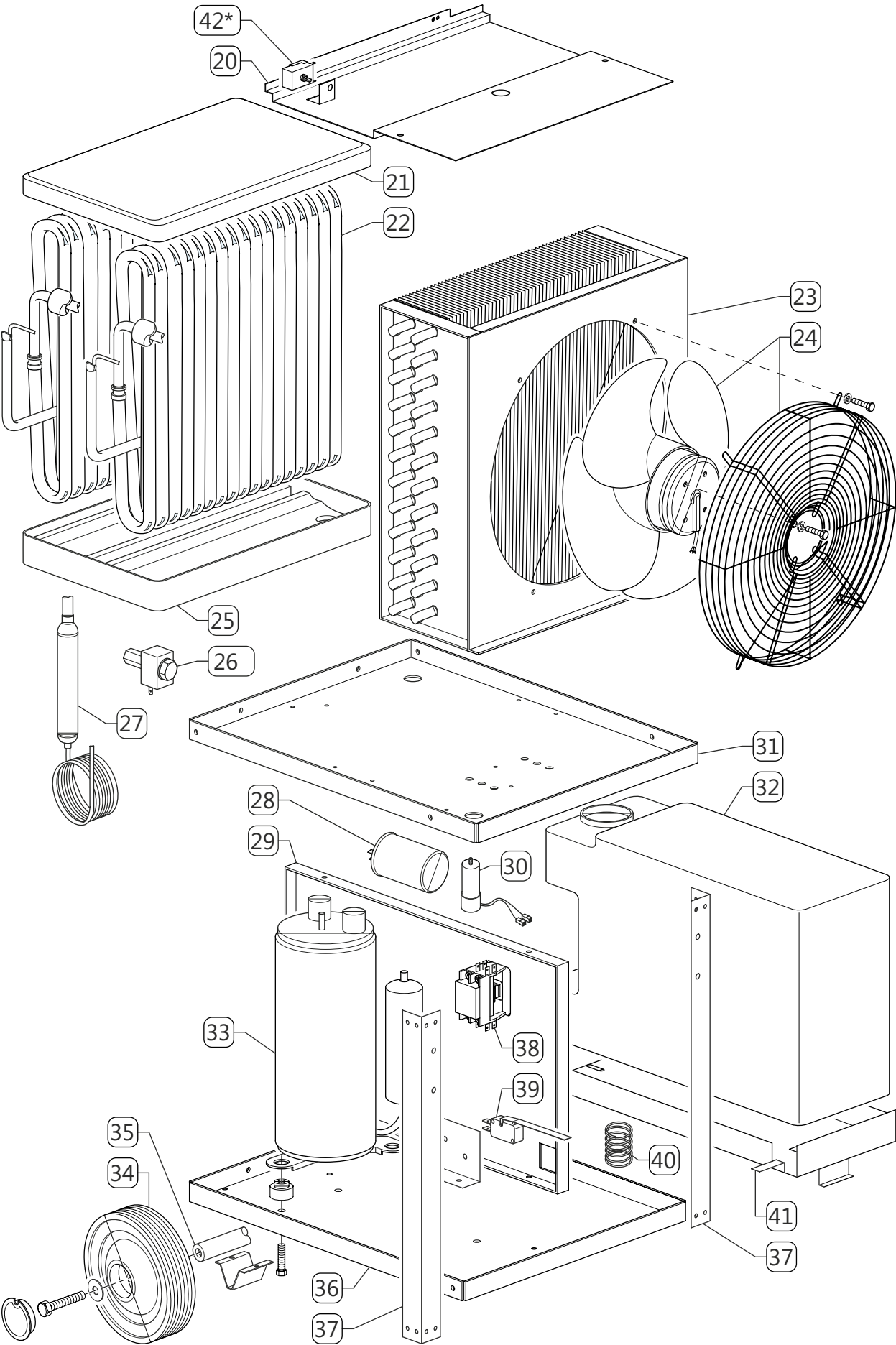


[www.serviscentrum.cz](http://www.serviscentrum.cz)  
+420 607 607 077  
[info@serviscentrum.cz](mailto:info@serviscentrum.cz)

Edizione 2012  
Rev. A





| Pos. | Code NR  | Description                            |
|------|----------|--|
| 1    | 4140.229 | Filter Seat                            |
| 2    | 4140.228 | Air Filter                             |
| 3    | 4140.160 | Filter Holder                          |
| 4    | 4140.161 | Back Panel                             |
| 5    | 4140.226 | Power Cord                             |
| 5.1  | 4140.350 | Strain Relief                          |
| 6    | 4140.209 | Top Panel                              |
| 7    | 4140.232 | Handle                                 |
| 8    | 4140.158 | Hours Counter                          |
| 9    | 4140.206 | Support Pcb                            |
| 10   | 4140.201 | Electronic Card                        |
| 11   | 4140.163 | Side Panels (R - L)                    |
| 12   | 4140.205 | Control Panel With Silkscreen Printing |
| 13   | 4140.245 | Dehumidostat                           |
| 14   | 4140.204 | Dehumidostat Knob                      |
| 15   | 4140.210 | Inside Grille                          |
| 16   | 4140.211 | Outside Grille                         |
| 17   | 4140.233 | Supporting Pipe                        |
| 18   | 4140.212 | Lower Front Panel                      |
| 19   | 4140.234 | Foot                                   |
| 20   | 4140.164 | Metal Top                              |
| 21   | 4140.165 | Upper Tray                             |
| 22   | 4140.213 | Evaporator                             |
| 23   | 4140.216 | Condenser                              |
| 24   | 4140.166 | Motorfan With Grille                   |
| 25   | 4140.214 | Lower Tray                             |
| 26   | 4140.167 | Solenoid Valve                         |
| 27   | 4140.222 | Refrigerant Filter With Capillary      |
| 28   | 4140.181 | Compressor Capacitor                   |
| 29   | 4140.168 | Vertical Panel                         |
| 30   | 4140.169 | Fan Capacitor                          |
| 31   | 4140.170 | Intermediate Panel                     |
| 32   | 4140.171 | Tank                                   |
| 33   | 4140.172 | Compressor                             |
| 34   | 4140.219 | Wheel Ø250 Mm                          |
| 35   | 4140.173 | Wheel Axle L=637 mm                    |
| 36   | 4140.174 | Bottom Panel                           |
| 37   | 4140.175 | Riser R+L                              |
| 38   | 4140.297 | Relay                                  |
| 38.1 | 4140.298 | Relay Base                             |
| 39   | 4140.177 | Microswitch With Support               |
| 40   | 4140.178 | Spring                                 |
| 41   | 4140.179 | Tank Support                           |
| 42   | 4140.180 | Thermostat                             |