

DH 44 / DH 62 DV (DUAL VOLTAGE)

UNIT 1

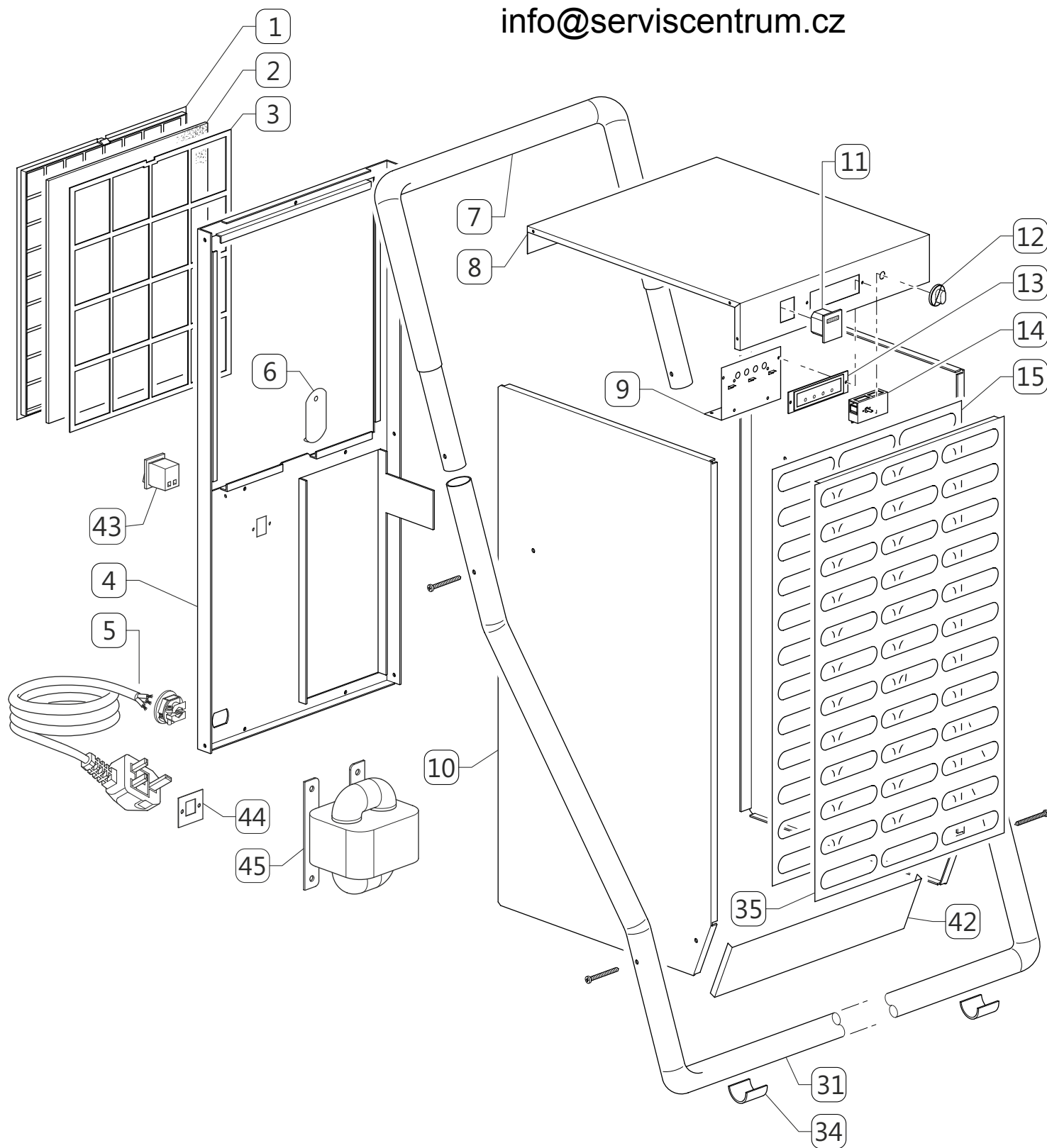
ILLUSTRATED PARTS BREAKDOWN

Edizione 2013
Rev. A

www.serviscentrum.cz

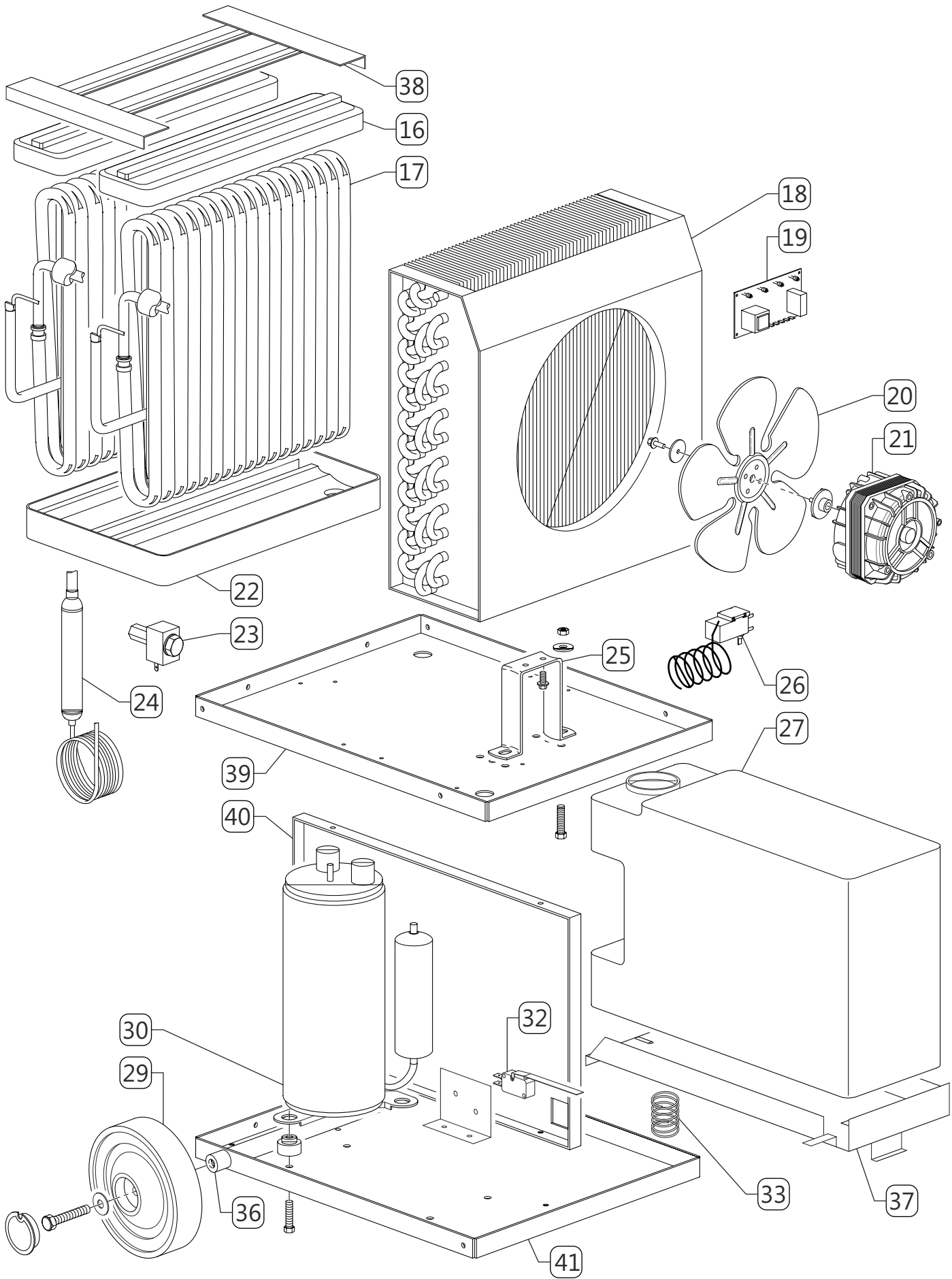
+420 607 607 077

info@serviscentrum.cz



DH 44 / DH 62 DV (DUAL VOLTAGE)

Edizione 2013
Rev. A



| Pos. | DH 44 | DH 62 | Description |
|-------|----------|----------|----------------------------------------|
| 1+2+3 | 4140.259 | 4140.259 | Air filter + lock and holder |
| 4 | 4140.336 | 4140.336 | Back panel |
| 5 | S/R | S/R | Powerd cord UK |
| 6 | S/R | S/R | Lock block |
| 7 | 4140.262 | 4140.262 | Handle |
| 8 | 4515.942 | 4515.942 | Cover |
| 9 | 4140.206 | 4140.206 | Support PCB |
| 10 | S/R | S/R | Side panel (left+right) |
| 11 | 4140.158 | 4140.158 | Hour counter |
| 12 | 4140.204 | 4140.204 | Knob |
| 13 | 4140.205 | 4140.205 | Control panel with silkscreen printing |
| 14 | 4140.245 | 4140.245 | Dehumidostat |
| 15 | 4140.299 | 4140.299 | Inside grille |
| 16 | 4140.247 | 4140.247 | Top tray |
| 17 | 4140.246 | 4140.246 | Evaporator |
| 18 | 4140.248 | 4140.264 | Condenser |
| 19 | 4140.201 | 4140.201 | Electronic card |
| 20 | 4140.249 | 4140.249 | Impeller |
| 21 | 4140.250 | 4140.250 | Motorfan |
| 22 | 4140.202 | 4140.202 | Lower condensate collecting tray |
| 23 | 4140.261 | 4140.261 | Solenoid valve |
| 24 | 4140.254 | 4140.267 | Refrigerant filter with capillary |
| 25 | 4140.251 | 4140.251 | Fan braket |
| 26 | 4140.230 | 4140.230 | Thermostat |
| 27 | 4140.255 | 4140.255 | Tank |
| 29 | 4032.094 | 4032.094 | Wheel |
| 30 | 4140.252 | 4140.265 | Compressor + compr. starting group |
| 31 | 4140.340 | 4140.340 | Pipe handle |
| 32 | 4140.258 | 4140.258 | Microswitch |
| 33 | 4140.256 | 4140.256 | Sprig |
| 34 | 4140.234 | 4140.234 | Foot |
| 35 | 4140.295 | 4140.295 | Outside grille |
| 36 | S/R | S/R | Wheel axle |
| 37 | 4140.263 | 4140.263 | Tank support |
| 38 | S/R | S/R | Support evaporator |
| 39 | S/R | S/R | Upper bottom |
| 40 | S/R | S/R | Vertical panel |
| 41 | S/R | S/R | Bottom panel |
| 42 | 4140.335 | 4140.335 | Lower front panel |
| 43 | 4140.346 | 4140.346 | Switch |
| 44 | 4140.347 | 4140.347 | Plate |
| 45 | 4140.348 | 4140.348 | Transformer |

S/R = Parts available on special request only