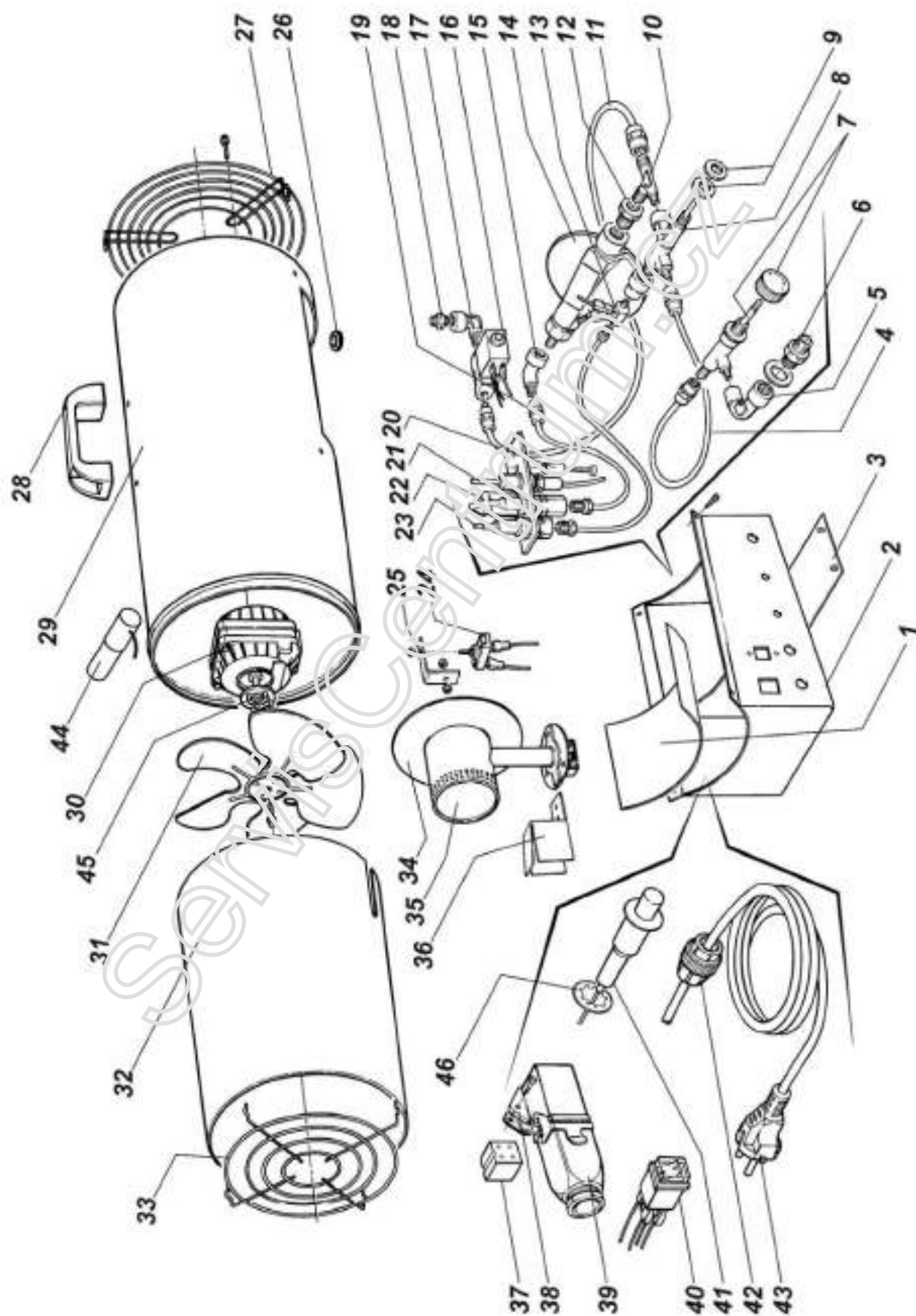


**Spareparts MASTER GAS HEATERS (TYPE - 14/29 M Plastic Base since 99')**

Fabr. NR	Description	Appropriate Code NR	
		BLP 14M	BLP 29M
1	BEARING SADDLE	N/A	N/A
2	PLASTIC BASE	N/A	N/A
3	TUCK OPENING	N/A	N/A
4	PIPE	4150.653	4150.653
5	* 90 DEGREE ELBOW THREAD 1/4"-M8	4150.645	4150.645
5.1	* 90 DEGREE ELBOW THREAD 1/4"-1/8"	4150.646	4150.646
6	* GAS INLET SOCKET	4160.636	4160.636
7	GAS SUPPLY TAP INLET THREAD M8	4150.649	4150.650
7.1	GAS SUPPLY TAP INLET THREAD 1/8"	4161.072	4160.675
8	RING NUT	4160.701	4160.701
9	GAS VALVE	4150.643	4150.643
10	NIPPLE	4150.915	4150.915
11	PIPE	4150.658	4150.658
12	END FITTING	4161.139	4161.139
13	ELECTRO-VALVE	4160.655	4160.655
14	90 DEGREE ELBOW	4150.641	4150.641
15	GAS NOZZLE	4160.722	4160.722
16	FERRULE FOR THERM.	4150.682	4150.682
17	THERMOCOUPLE	4150.673	4150.673
18	IGNITION ELECTRODE	4150.761	4150.761
19	FAIRLEAD	4150.683	4150.683
20	ENTRY GRILL	4160.784	4160.784
21	HANDLE	4150.615	4150.615
22	YELLOW COVER N/A N/A		
23	ELECTRIC MOTOR	4160.628	4160.629
24	FAN	4161.049	4160.690
25	CHAMBER	N/A	N/A
26	OUTLET GRILL	4150.611	4150.611
27	DEFLECTOR DISC	N/A	N/A
28	GAS BURNER	4160.687	4160.687
29	SWITCH	4150.635	4150.635
30	PIEZO IGNITOR WITH ADAPTER	4162.222	4162.222
31	WIRE NUT	4150.625	4150.625
32	ELECTRIC CABLE	4160.631	4160.631
33	* THERMOSTAT SUPPORT	4150.924	4150.924
34	SAFETY THERMOSTAT	4160.636	4160.636
35	CONNECTION FAN	4150.717	4150.717
36	CONDENSER		4150.912
37	ADAPTER FOR PIEZO IGNITOR	N/A	N/A
38	THROTTLING DISC	4161.124	
	GAS HOSE	4160.661	4160.661

\* Discontinued limited Qty. Available

N/A = Parts Not Available

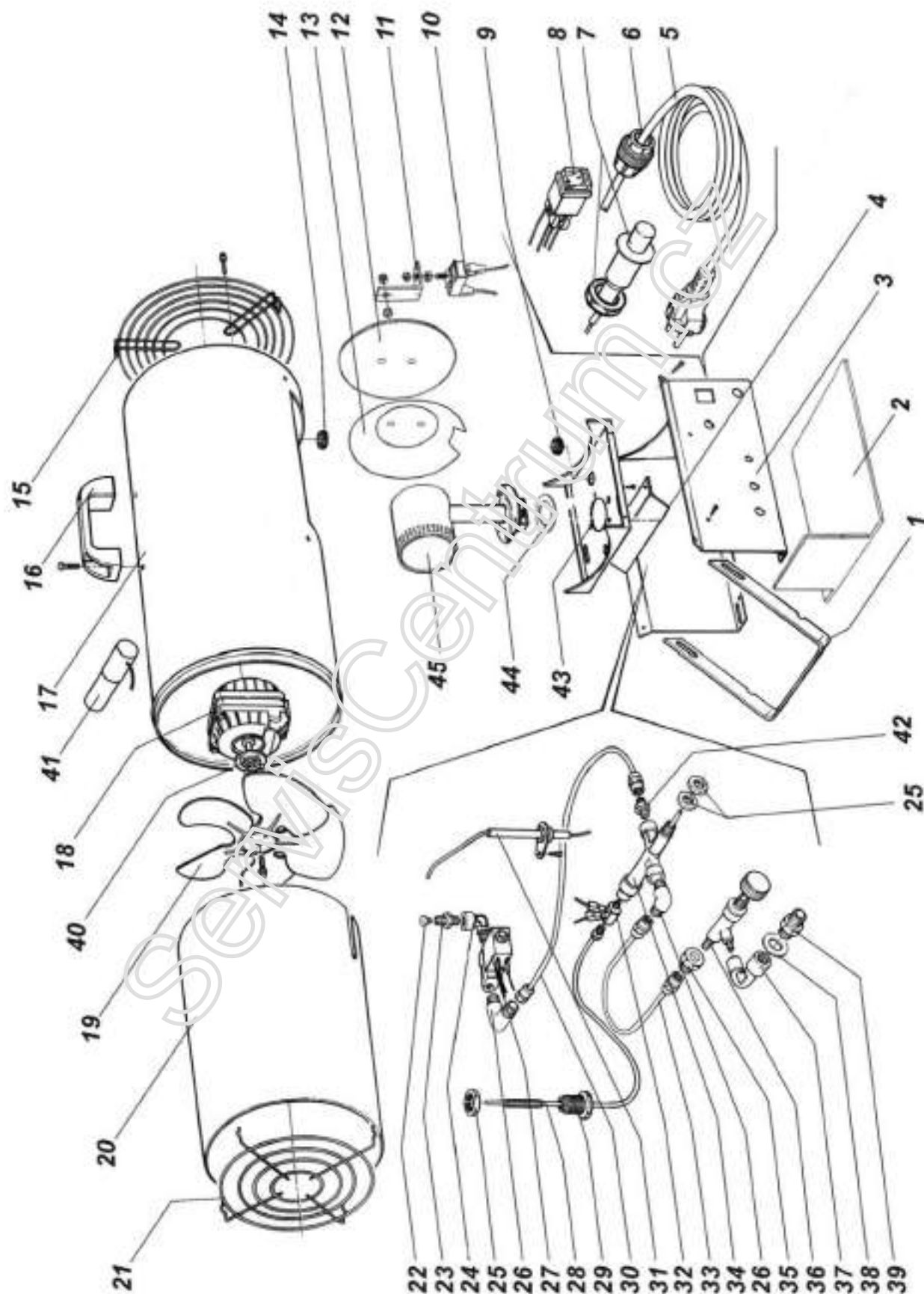


**Spareparts MASTER GAS HEATERS (TYPE - 29 A Plastic Base since 99')**

<b>Fabr. NR</b>	<b>Description</b>	<b>Appropriate Code NR BLP 29A</b>
1	BEARING SADDLE	N/A
2	SWITCH BOARD	N/A
3	TUCK OPENING	N/A
4	PIPE	4150.653
5	* 90 DEGREE ELBOW THREAD 1/4"-M8	4150.645
5.1	1 * 90 DEGREE ELBOW THREAD 1/4"-1/8"	4150.646
6	* GAS INLET SOCKET	4160.636
7	GAS SUPPLY TAP INLET THREAD M8	4150.650
7.1	GAS SUPPLY TAP INLET THREAD 1/8"	4160.675
8	GAS VALVE	4150.643
9	RING NUT	4160.701
10	T-PIECE	4150.904
11	COPPER PIPE	4150.658
12	REDUCING CONNECTOR	4150.964
13	END FITTING	4161.139
14	PRESSURE REGULATOR	4150.035
15	90 DEGREE ELBOW	N/A
16	ELECTRO-VALVE	4160.655
17	90 DEGREE ELBOW	150.641
18	GAS NOZZLE	4160.722
19	PIPE	4150.661
20	SPACER	4161.047
21	IGNITION ELECTRODE	4161.046
22	PILOT BURNER	4161.102
23	THERMOCOUPLE	4161.138
24	SAFETY THERMOSTAT	4160.636
25	* THERMOSTAT SUPPORT	4150.924
26	FAIRLEAD	150.683
27	ENTRY GRILL	4160.784
28	HANDLE	4150.615
29	YELLOW COVER	N/A
30	ELECTRIC MOTOR	4160.629
31	FAN	4160.690
32	CHAMBER	N/A
33	OUTLET GRID	4150.611
34	DEFLECTOR DISC	N/A
35	GAS BURNER	4160.687
36	PILOT BURNER SHIELD	4161.048
37	SOCKET ELEMENT	4161.400
38	FIXED CASE	4160.647
39	COMPLETE PLUG	4150.696
40	SWITCH	4150.635
41	PIEZO IGNITOR WITH ADAPTER	4162.222
42	WIRE NUT	4150.625
43	ELECTRIC CABLE	4160.631
44	CONDENSER	4150.912
45	FAN CONNECTION	4150.717
46	ADAPTER FOR PIEZO IGNITOR	N/A
	GAS HOSE	4160.661

\* Discontinued limited Qty. Available

N/A = Parts Not Available



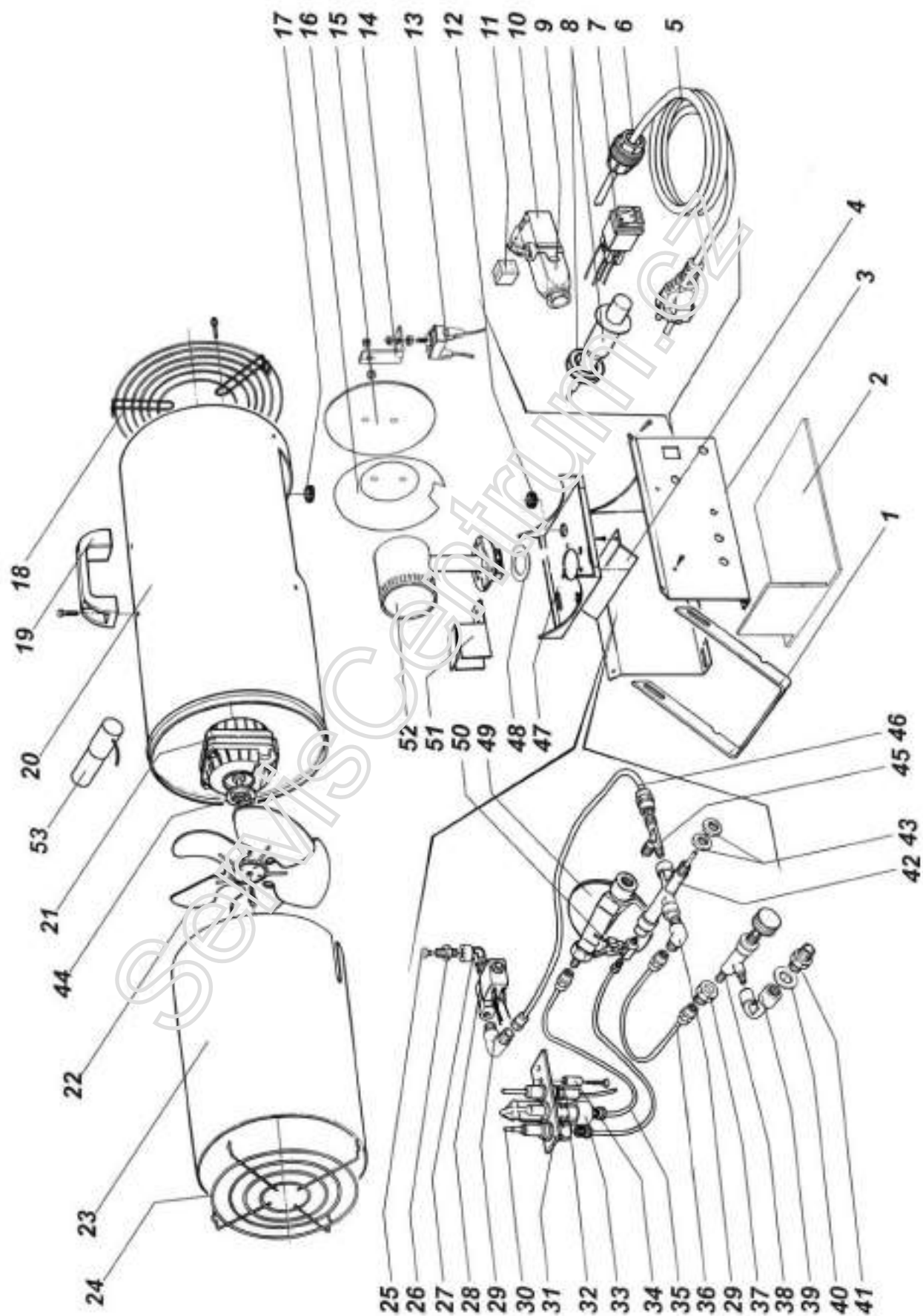
Spareparts MASTER GAS HEATERS (TYPE - 46/69 M since 99' - Motor on back grill)

Fabr. NR	Description	Appropriate Code NR	
		BLP 46M	BLP 69M
1	* PIN	4150.665	4150.666
2	* LOWER COVER	4150.639	4150.640
3	* CONTROL PANEL	4150.686	4150.687
4	* PROTECTION	4150.693	4150.694
5	ELECTRIC CABLE	4150.631	4150.631
6	WIRE NUT	4150.625	4150.625
7	PIEZO IGNITOR	4150.634	4150.634
8	SWITCH	4150.635	4150.635
9	FAIRLEAD	4150.683	4150.683
10	SAFETY THERMOSTAT	4160.636	4160.636
11	* THERMOSTAT SUPPORT	4150.924	4150.924
12	DEFLECTOR DISC	N/A	N/A
13	DEFLECTOR DISH	N/A	N/A
14	FAIRLEAD	N/A	N/A
15	ENTRY GRILL	N/A	4160.758
16	HANDLE	4150.615	4150.615
17	* YELLOW COVER	4150.602	4150.603
18	ELECTRIC MOTOR	4160.630	4160.958
19	FAN	4150.691	4160.959
20	* CHAMBER	4150.606	4150.607
21	OUTLET GRILL	4150.613	4150.614
22	GAS NOZZLE	4150.669	4150.670
23	NOZZLE HOLDER	N/A	N/A
24	90 DEGREE ELBOW	4150.642	4150.642
25	NUT	4160.701	4160.701
26	90 DEGREE ELBOW	4150.906	4150.906
27	ELECTRO-VALVE	4160.963	4160.963
28	THERMOCOUPLE	4150.673	4150.673
29	FERRULE FOR THERM.	4150.682	4150.682
30	COPPER PIPE	4150.659	4150.700
31	IGNITION ELECTRODE	4150.671	4150.671
32	END FITTING	4161.139	4161.139
33	COPPER PIPE	4150.654	4150.654
34	GAS VALVE	4150.644	4150.644
35	REDUCTION	4160.964	4160.964
36	GAS SUPPLY TAP INLET THREAD M8	4150.651	4150.652
36.1	GAS SUPPLY TAP INLET THREAD 1/8"	4160.683	4160.684
37	* 90 DEGREE ELBOW THREAD 1/4"-M8	4150.645	4150.645
37.1	* 90 DEGREE ELBOW THREAD 1/4"-1/8"	4150.646	4150.646
38	FLAT WASHER	4160.614	4160.614
39	* GAS INLET SOCKET	4150.636	4150.636
40	CONNECTION FAN	4150.717	4150.717
41	CONDENSER	4150.912	4150.914
42	NIPPLE	4150.911	4150.911
43	* SUPPORT BURNER	4150.629	4150.630
44	THROTTLING	4160.769	
45	GAS BURNER	4150.676	4150.676
	GAS HOSE	4160.661	4160.661

\* Discontinued limited Qty.Available

N/A = Parts Not Available





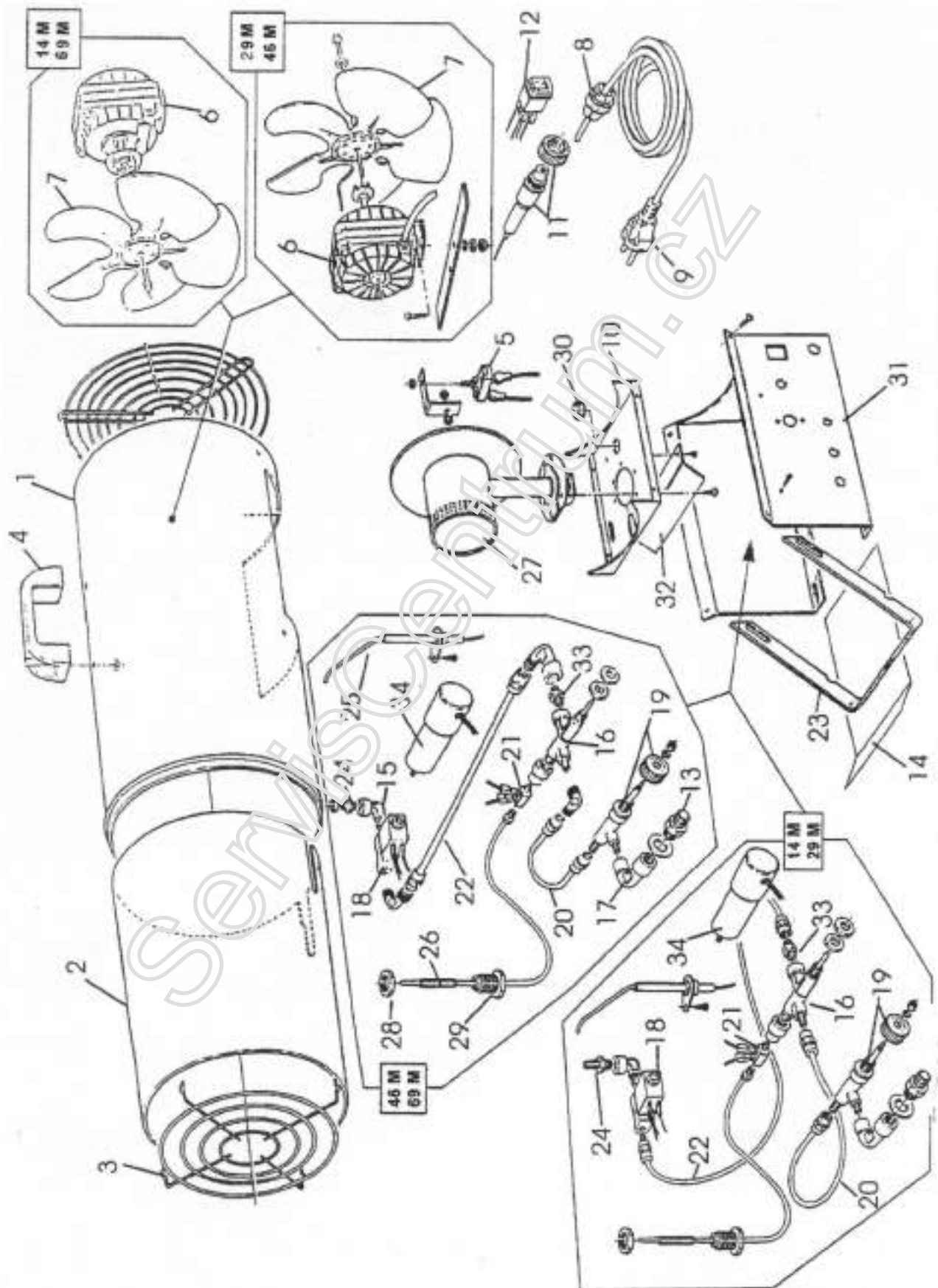
Spareparts MASTER GAS HEATERS (TYPE - 46/69 A since 99' - Motor on back grill)

Fabr. NR	Description	Appropriate Code NR	
		BLP 46A	BLP 69A
1	* PIN	4150.665	4150.666
2	* LOWER COVER	4150.639	4150.640
3	CONTROL PANEL	N/A	N/A
4	* PROTECTION	4150.693	4150.694
5	ELECTRIC CABLE	4150.631	4150.631
6	WIRE NUT	4150.625	4150.625
7	SWITCH	4150.635	4150.635
8	PIEZO IGNITOR	4150.634	4150.634
9	COMPLETE PLUG	4150.696	4150.696
10	FIXED CASE	4160.647	4160.647
11	SOCKET ELEMENT	4161.400	4161.400
12	FAIRLEAD	4150.683	4150.683
13	SAFETY THERMOSTAT	4160.636	4160.636
14	* THERMOSTAT SUPPORT	4150.924	4150.924
15	DEFLECTOR DISC	N/A	N/A
16	DEFLECTOR DISH	N/A	N/A
17	FAIRLEAD	N/A	N/A
18	ENTRY GRILL	N/A	4160.758
19	HANDLE	4150.615	4150.615
20	* YELLOW COVER	4150.602	4150.603
21	ELECTRIC MOTOR	4160.958	4160.958
22	FAN	4160.959	4160.959
23	CHAMBER	N/A	N/A
24	OUTLET GRILL	4150.613	4150.614
25	GAS NOZZLE	4150.669	4150.670
26	NOZZLE HOLDER	N/A	N/A
27	90 DEGREE ELBOW	4150.642	4150.642
28	ELECTRO-VALVE	4160.963	4160.963
29	90 DEGREE ELBOW	4150.906	4150.906
30	THERMOCOUPLE	4161.138	4161.138
31	PILOT BURNER	4161.102	4161.102
32	IGNITION ELECTRODE	4161.046	4161.046
33	PILOT BURNER SHIELD	N/A	N/A
34	SPACER	4161.047	4161.047
35	PIPE	4150.661	4150.661
36	COPPER PIPE	4150.654	4150.654
37	REDUCTION	4160.964	4160.964
38	GAS SUPPLY TAP INLET THREAD M8	4150.651	4150.652
38.1	GAS SUPPLY TAP INLET THREAD 1/8"	4160.683	4160.684
39	* 90 DEGREE ELBOW THREAD 1/4"-M8	4150.645	4150.645
39.	1 * 90 DEGREE ELBOW THREAD 1/4"-1/8"	4150.646	4150.646
40	FLAT WASHER	4160.614	4160.614
41	* GAS INLET SOCKET	4150.636	4150.636
42	GAS VALVE	4150.644	4150.644
43	RING NUT	4160.701	4160.701
44	CONNECTION FAN	4150.717	4150.717
45	T-PIECE	4150.907	4150.907
46	COPPER PIPE	4150.659	4150.660
47	* SUPPORT BURNER	N/A	N/A
48	THROTTLING	4160.769	
49	PRESSURE REGULATOR	4161.035	4161.035
50	END FITTING	4161.139	4161.139
51	PILOT BURNER SHIELD	4161.048	4161.048
52	GAS BURNER	4160.676	4160.676
53	CONDENSER	4150.912	4150.914
	GAS HOSE	4160.661	4160.661

\* Discontinued limited Qty.Available

N/A = Parts Not Available



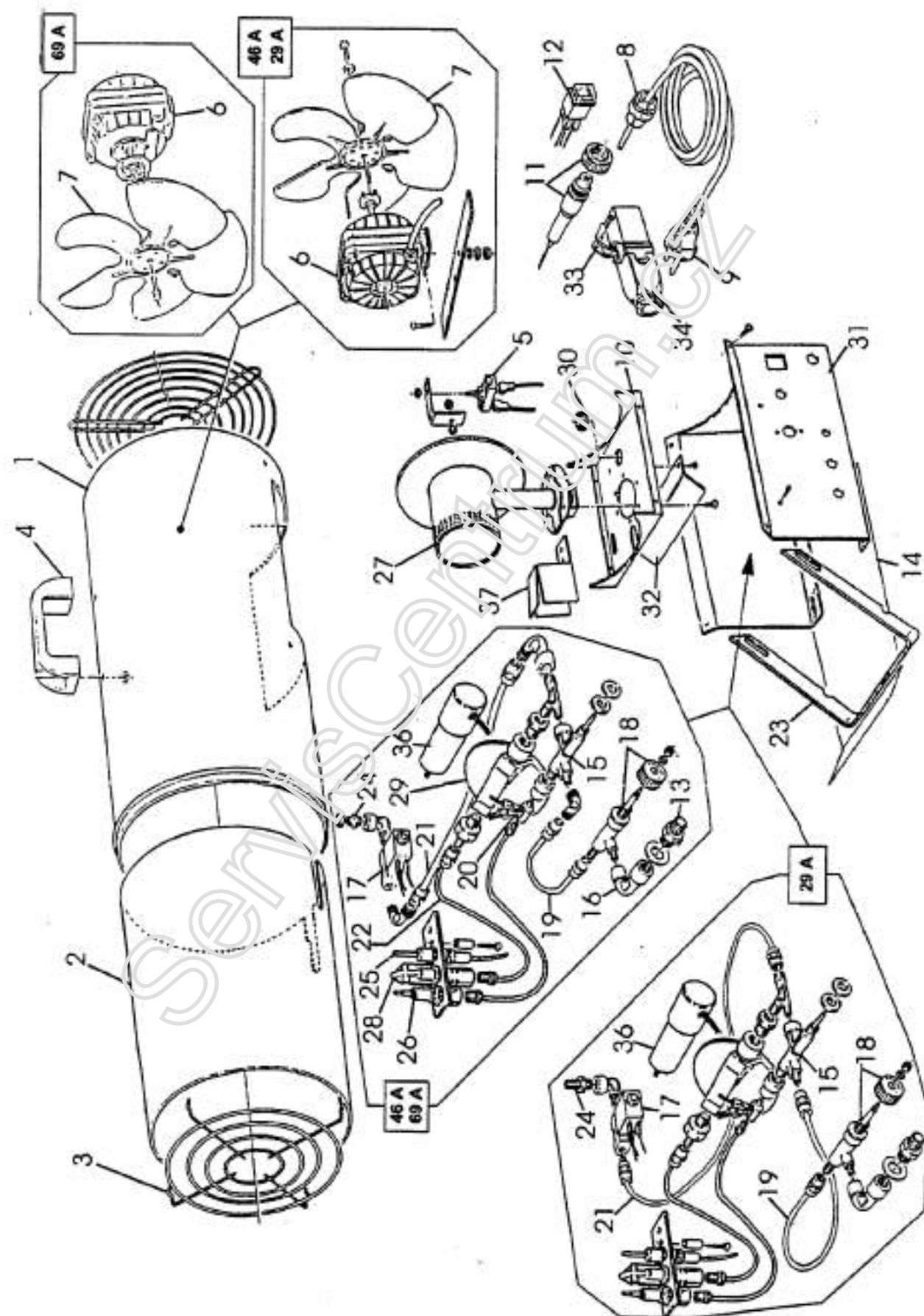


**Spareparts MASTER GAS HEATERS (TYPE - M till 98')**

Fabr. NR	Description	Appropriate Code NR			
		BLP 14M	BLP 29M	BLP 46M	BLP 69M
1	* COVER	4150.600	4150.601	4150.602	4150.603
2	* CHAMBER	4150.604	4150.605	4150.606	4150.607
3	OUTLET GRILL	4150.611	4150.612	4150.613	4150.614
4	HANDLE	4150.615	4150.615	4150.615	4150.615
5	SAFETY THERMOSTAT	4160.636	4160.636	4160.636	4160.636
6	ELECTRIC MOTOR	4160.628	4160.629	4160.630	4160.958
7	FAN	4161.049	4150.622	4150.623	4160.959
8	WIRE NUT	4150.625	4150.625	4150.625	4150.625
9	ELECTRIC CABLE	4160.631	4160.631	4160.631	4160.631
10	* SUPPORT BURNER	4150.627	4150.628	4150.629	4150.630
11	PIEZO IGNITOR	4150.634	4150.634	4150.634	4150.634
12	SWITCH	4150.635	4150.635	4150.635	4150.635
13	* GAS INLET SOCKET	4150.636	4150.636	4150.636	4150.636
14	* LOWER PROTECTIVE COVER	4150.637	4150.638	4150.639	4150.640
15	90 DEGREE ELBOW	4150.641	4150.641	4150.642	4150.642
16	GAS VALVE	4150.643	4150.643	4150.644	4150.644
17	* INLET ELBOW	4150.645	4150.645	4150.645	4150.645
18	ELECTRO- VALVE	4160.655	4160.655	4160.963	4160.963
19	GAS TAP	4150.649	4150.650	4150.651	4150.652
20	EXTENDING NOZZLE FITTING	4150.653	4150.653	4150.654	4150.654
21	END FITTING	4161.138	4161.139	4161.139	4161.139
22	EXTENDING NOZZLE FITTING	4150.658	4150.658	4150.659	4150.700
23	* PIN	4150.663	4150.664	4150.665	4150.666
24	GAS NOZZLE	4160.702	4160.722	4150.669	4150.670
25	IGNITION ELECTRODE	4150.671	4150.671	4150.671	4150.671
26	THERMOCOUPLE	4150.673	4150.673	4150.673	4150.673
27	GAS BURNER	4160.687	4160.687	4160.676	4160.676
28	RING NUT	4160.701	4160.701	4160.701	4160.701
29	FERRULE FOR THERMOCOUPLE	4150.682	4150.682	4150.682	4150.682
30	FAIRLEAD	4150.683	4150.683	4150.683	4150.683
31	* BASE	4150.684	4150.685	4150.686	4150.687
32	* PROTECTION	4150.691	4150.692	4150.693	4150.694
33	GAS CONNECTION	4150.915	4150.915	4150.911	4150.911
34	CONDENSER		4150.912	4150.912	4150.914
35	90° ELBOW			4150.906	4150.906
36	CONNECTION 5/8"	4150.717	4150.717	4150.717	4150.717
37	* THERMOSTAT SUPPORT	4150.924	4150.924	4150.924	4150.924
38	PLATE BURNER	N/A	N/A	N/A	N/A
39	THROTTLING DISC	4161.124		4160.769	
	GAS HOSE	4160.661	4160.661	4160.661	4160.661

\* Discontinued limited Qty. Available

N/A = Parts Not Available



## Spareparts MASTER GAS HEATERS (TYPE - A till 98')

Fabr. NR	Description	Appropriate Code NR		
		BLP 29A	BLP 46A	BLP 46A
1	* COVER	4150.601	4150.602	4150.603
2	* CHAMBER	4150.608	4150.609	4150.610
3	OUTLET GRILL	4150.612	4150.613	4150.614
4	HANDLE	4150.615	4150.615	4150.615
5	SAFETY THERMOSTAT	4160.636	4160.636	4160.636
6	ELECTRIC MOTOR	4160.629	4160.630	4160.958
7	FAN	4150.622	4150.623	4160.959
8	WIRE NUT	4150.625	4150.625	4150.625
9	ELECTRIC CABLE	4160.631	4160.631	4160.631
10	* SUPPORT BURNER	4150.628	4150.628	4150.629
11	PIEZO IGNITOR	4150.634	4150.634	4150.634
12	SWITCH	4150.635	4150.635	4150.635
13	* GAS INLET SOCKET	4150.636	4150.636	4150.636
14	* LOWER PROTECTIVE COVER	4150.638	4150.639	4150.640
15	GAS VALVE	4150.643	4150.644	4150.644
16	* 90 DEGREE ELBOW	4150.645	4150.645	4150.645
17	ELECTRO- VALVE	4160.665	4160.963	4160.963
18	GAS TAP	4150.650	4150.651	4150.652
19	EXTENDING NOZZLE FITTING	4150.653	4150.654	4150.654
20	END FITTING	4161.139	4161.139	4161.139
21	EXTENDING NOZZLE FITTING	4150.658	4150.659	4150.660
22	EXTENDING PILOT FITTING	4150.661	4150.661	4150.661
23	* PIN	4150.664	4150.665	4150.666
24	GAS NOZZLE	4160.722	4150.669	4150.670
25	IGNITION ELECTRODE	4161.046	4161.046	4161.046
26	THERMOCOUPLE	4161.138	4161.138	4161.138
27	GAS BURNER	4160.687	4160.676	4160.676
28	PILOT FLAME	4161.102	4161.102	4161.102
29	REGULATOR	4161.035	4161.035	4161.035
30	FAIRLEAD	4150.683	4150.683	4150.683
31	BASE	N/A	N/A	N/A
32	* PROTECTION	4150.692	4150.69	4150.694
33	FIX CASE	4031.088	4031.088	4031.088
34	PLUG-IN	4150.696	4150.696	4150.696
35	CONNECTION FAN	4150.717	4150.717	4150.717
36	CONDENSER	4150.912	4150.912	4150.914
37	PILOT FLAME COVER	4161.048	4161.048	4161.048
38	* THERMOSTAT SUPPORT	4150.924	4150.924	4150.924
39	90 DEGREE ELBOW	4150.641	4150.642	4150.642
40	T-PIECE	4150.904	4150.907	4150.907
41	90° ELBOW	4150.906	4150.906	
42	THROTTLING DISC		4160.769	
43	PLATE BURNER	N/A	N/A	N/A
44	RING NUT	4160.701	4160.701	4160.701
	GAS HOSE	4160.661	4160.661	4160.661

\* Discontinued limited Qty. Available

N/A = Parts Not Available

# Spareparts MASTER GAS HEATERS

Description	Appropriate	Master NR	Code NR
BURNER ASS.	BLP 300	097849-01	4150.560
BURNER ASS.	BLP 150	097849-02	4150.513
BURNER ASS.	BLP 35	099727-01	4150.508
BUSHING INTERVAL	BLP 35/150	097776-01	4150.503
BUMPER RUBBER	BLP 150	M 50631	4150.553
CLIP	BLP 150	098428-01	4150.514
COUPLING KIT	FOR GAS-BOTTLES	DUTCH	4150.250
COUPLING KIT	FOR GAS BOTTLES	EUROPEAN	4150.260
D.S.I. CONTROL	BLP 150/300	M 51605-04	4150.526
ELECTR.-IGNITOR	BLP 35	099539-01	4150.506
FAN	BLP 300	097811-01	4150.535
FAN	BLP 35	099537-02	4150.505
FAN	BLP 150	M 51153-01	4150.522
FAN GUARD	BLP 35	099540-01	4150.500
FAN GUARD	BLP 150	097964-03A	4150.520
FAN GUARD	BLP 300	097964-01A	4150.536
FUEL TUBE	BLP 150	097965-02	4150.597
FUEL TUBE	BLP300	100311-01	4104.151
HOSE & REGULATOR	BLP 35	100359-01	4150.510
HOSE & REGULATOR	BLP 150/300	097953-02	4150.512
IGNITOR	BLP 35	097159-02	4150.507
IGNITOR	BLP 150/300	097805-01	4150.511
IGNITOR CABLE	BLP 150/300	097806-02	4150.516
LAMP	BLP 150/300	100371-01	4150.518
MALE FITTING	BLP 300	097809-01	4150.884
MALE COMPR. ELBOW	BLP 300	098825-01	4150.885
MOTOR	BLP 300	100144-01	4150.525
MOTOR	BLP 150	100298-01	4150.521
MOTOR	BLP 35	100398-01	4150.530
NOZZLE	BLP 150	098425-01	4150.595
NOZZLE	BLP 300	099679-02	4150.175
NUT	BLP 150/300	NPC 00C	4150.548
ORIFICE-VALVE	BLP 35	099541-01	4150.504
REAR PLATE	BLP 150	100299-01	4150.519
SLEEVE REGULATOR	ALL BLP TYPES	-	4150.254
SCREW	ALL BLP TYPES	M12461-14	4108.540
SCREW	BLP 35	099230-01	4150.509
SPACER	BLP 150	098431-01	4150.515
STRAIN RELIEF BUSHINGS		M 50400	4150.528
TERMINAL BOARD	BLP 150/300	099125-06	4150.517
THERMAL SWITCH	BLP 35	097952-04	4150.551
THERMAL SWITCH	BLP 300	097952-06	4150.550
THERM.SWITCH ASS	BLP 150	097952-07	4150.501
THERMOCOUPLE	BLP 35	099538-01	4150.502
THERMOSTAT TH-2	BLP 150/300		4100.426
VALVE SOLENOID	BLP 150/300	097803-01 (098201-01)	4150.524