

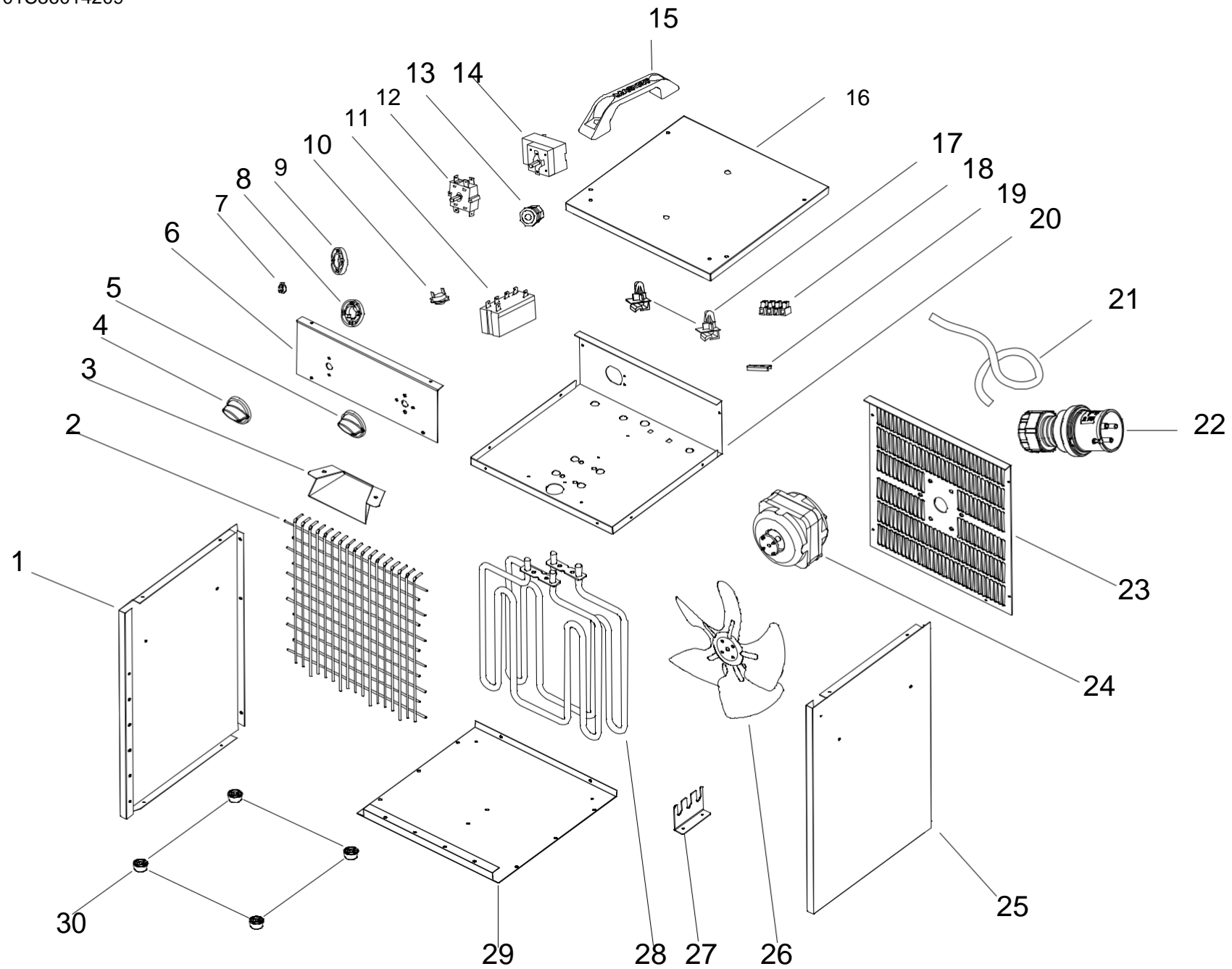
MODEL B 3 EPB W 110

UNIT 1

ILLUSTRATED PARTS BREAKDOWN

FROM SERIAL NUMBER: 01C36014209

REV. -- OCTOBER 2016



MODEL B 3 EPB W 110

UNIT 2

PARTS LIST

| Pos. | Code N° | Description | REV.- - OCTOBER 2016 |
|------|----------|--------------------------------|----------------------|
| 1 | 4615.718 | RIGHT PANEL | |
| 2 | 4615.721 | GRILLE | |
| 3 | 4615.723 | TEMPERATURE PROTECTION BRACKET | |
| 4 | 4615.758 | THERMOSTAT SWITCH KNOB | |
| 5 | 4615.757 | FAN SWITCH KNOB | |
| 6 | 4615.724 | FRONTAL PANEL | |
| 7 | 4615.270 | SWITCH GEAR BLOCK | |
| 8 | 4615.755 | SWITCH GASKET | |
| 9 | 4615.759 | THERMOSTAT GASKET | |
| 10 | 4615.747 | SAFETY THERMOSTAT | |
| 11 | 4615.739 | RELAY | |
| 12 | 4615.741 | SELECTOR | |
| 13 | 4615.742 | STRAIN RELIEF | |
| 14 | 4615.272 | THERMOSTAT | |
| 15 | 4162.934 | HANDLE | |
| 16 | 4615.720 | UPPER PANEL | |
| 17 | 4615.750 | PROBE FIXED FRAME | |
| 18 | 4615.740 | THERMINAL | |
| 19 | 4615.708 | THERMINAL BASE | |
| 20 | 4615.732 | BASE | |
| 21 | 4615.763 | POWER CORD | |
| 22 | 4615.700 | PLUG | |
| 23 | 4615.722 | REAR PANEL | |
| 24 | 4615.703 | ELECTRICAL MOTOR | |
| 25 | 4615.719 | LEFT PANEL | |
| 26 | 4615.202 | FAN | |
| 27 | 4615.729 | RESISTANCE BRACKET | |
| 28 | 4615.705 | RESISTANCE | |
| 29 | 4615.727 | LOWER PANEL | |
| 30 | 4615.752 | RUBBER FOOT | |

WWW.SERVISCENTRUM.CZ
+420 607 607 077

info@serviscentrum.cz