



Robin Engine

Model EC08

for BOMAG

PARTS CATALOG

Spec.No. EC08D**0840

 **富士重工業株式会社**
FUJI HEAVY INDUSTRIES LTD.

FIG. 100

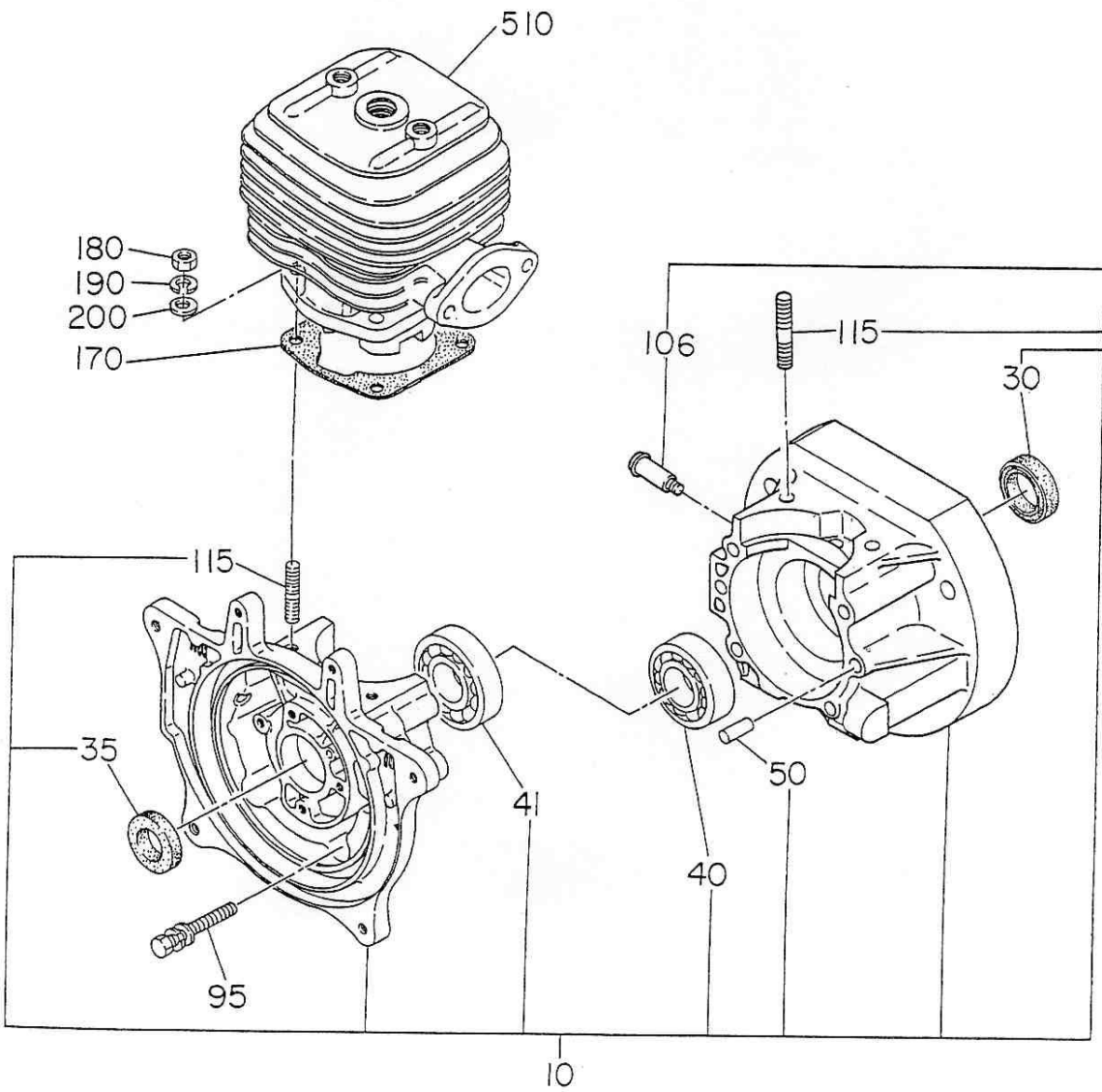


FIG. 200

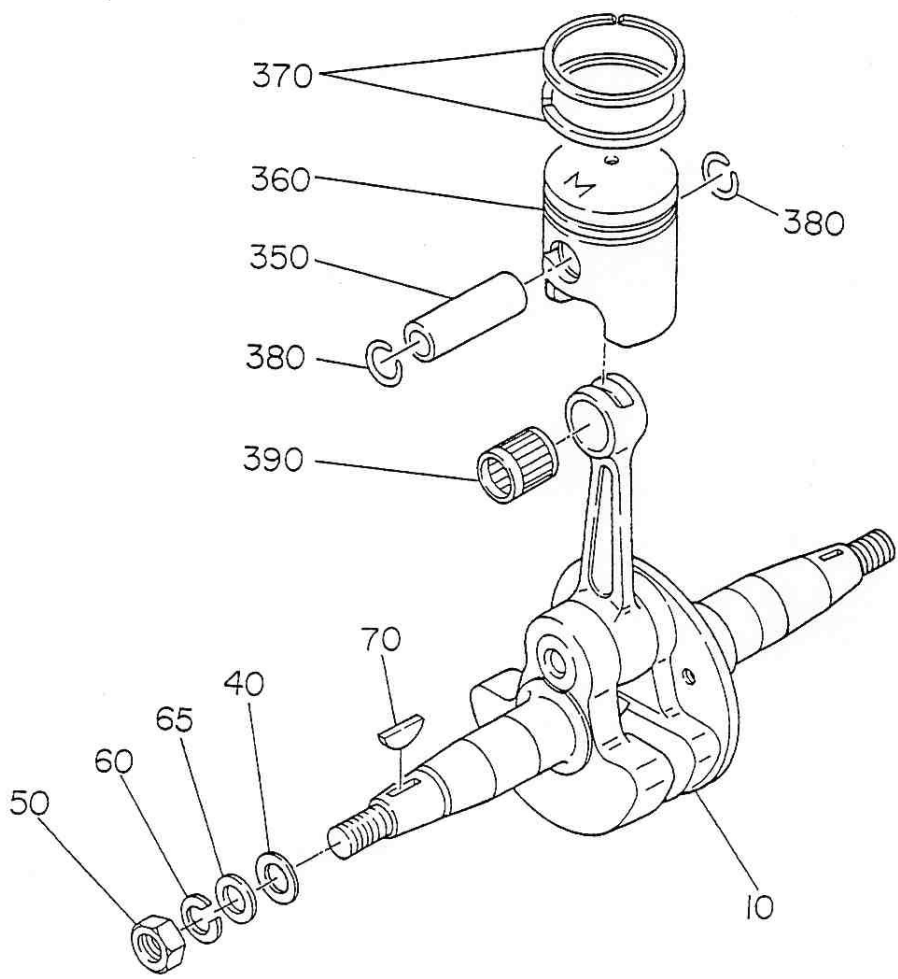


FIG. 300

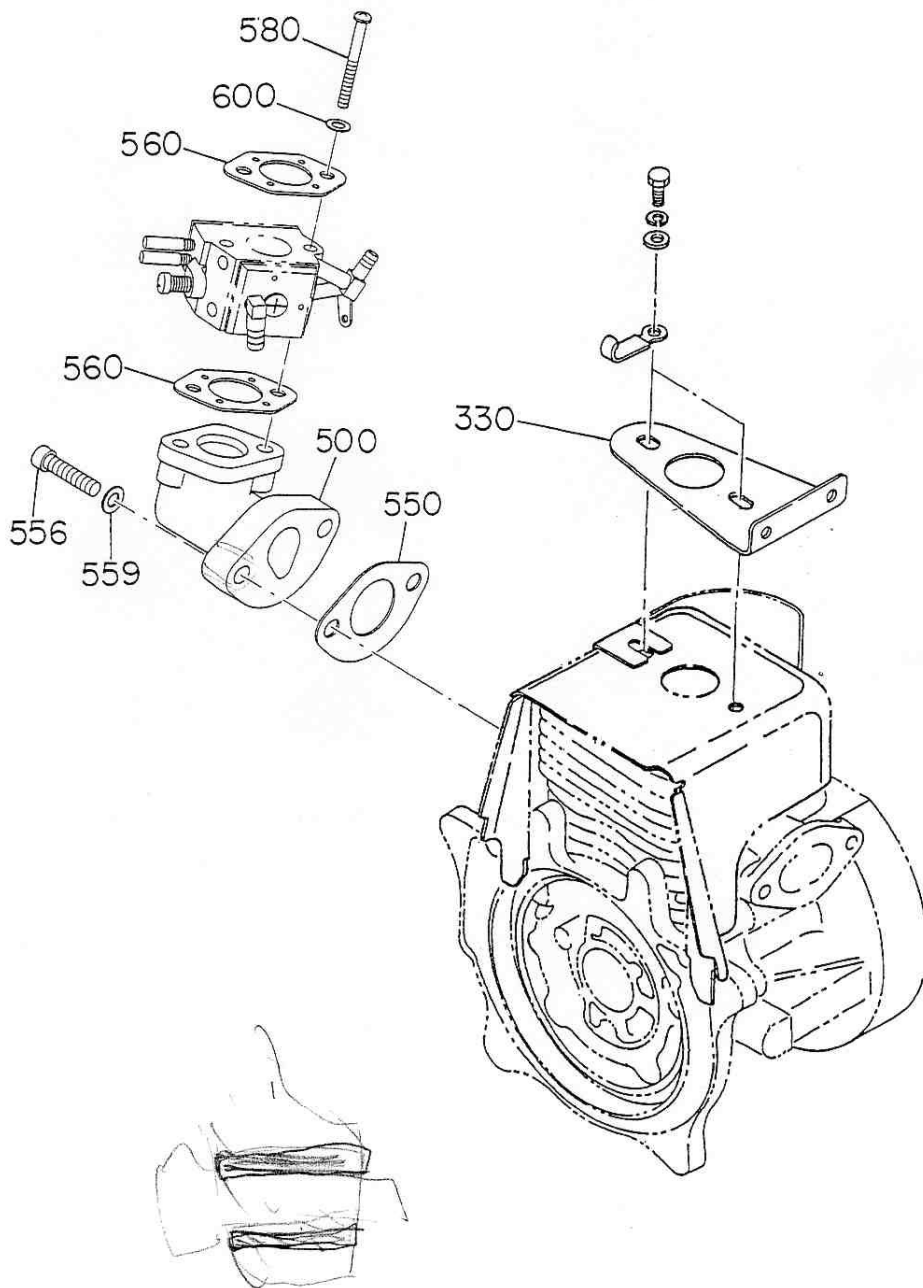
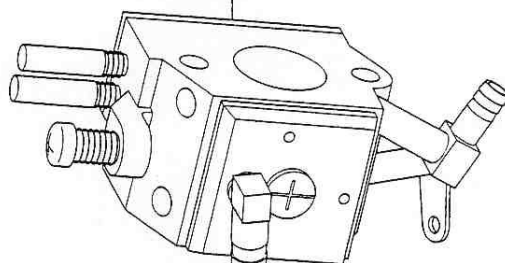


FIG. 600

REFER TO FIG. 6100

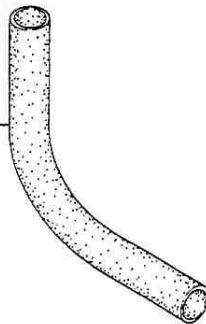
210



245



244



245



FIG. 700

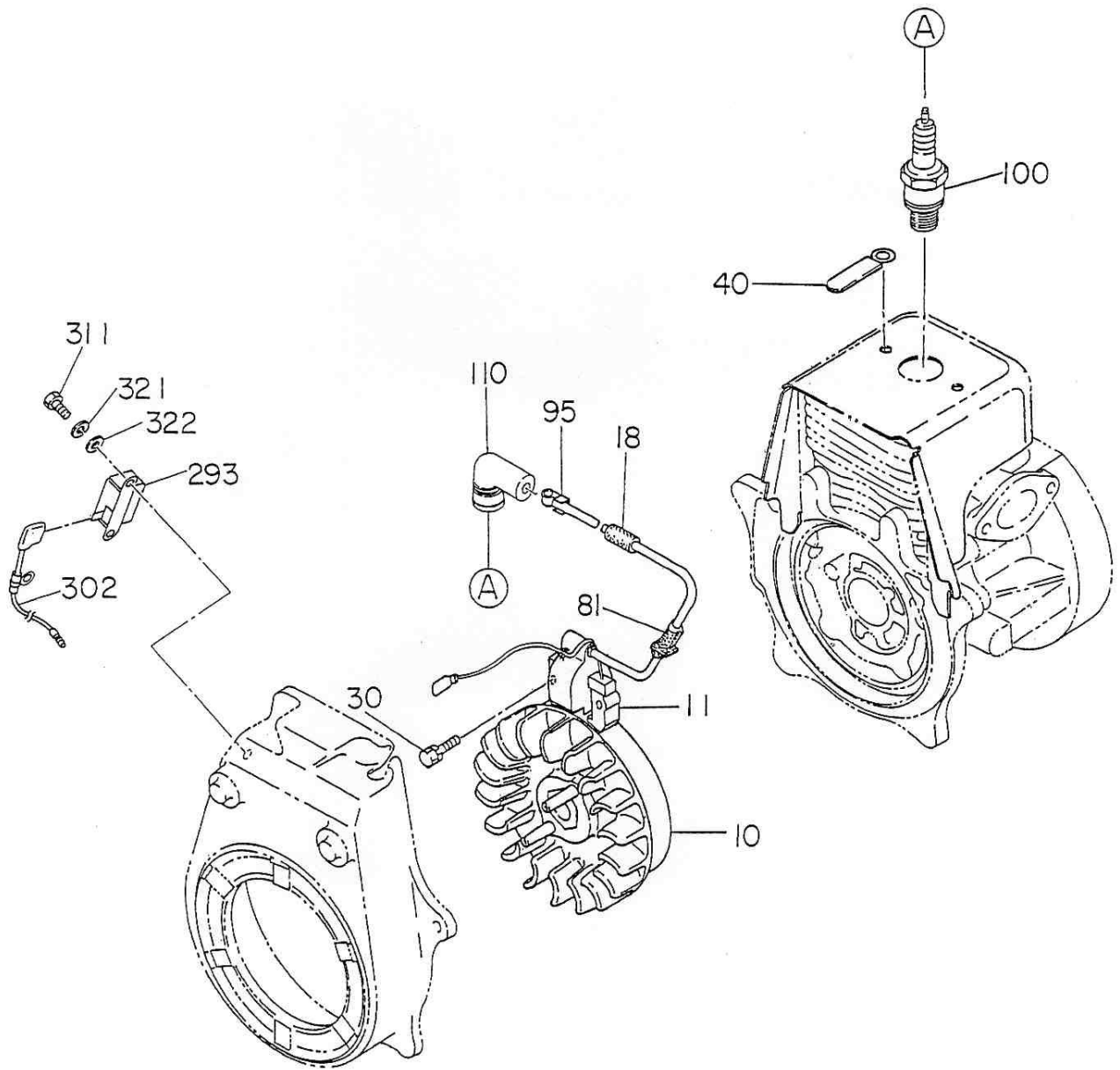


FIG. 900

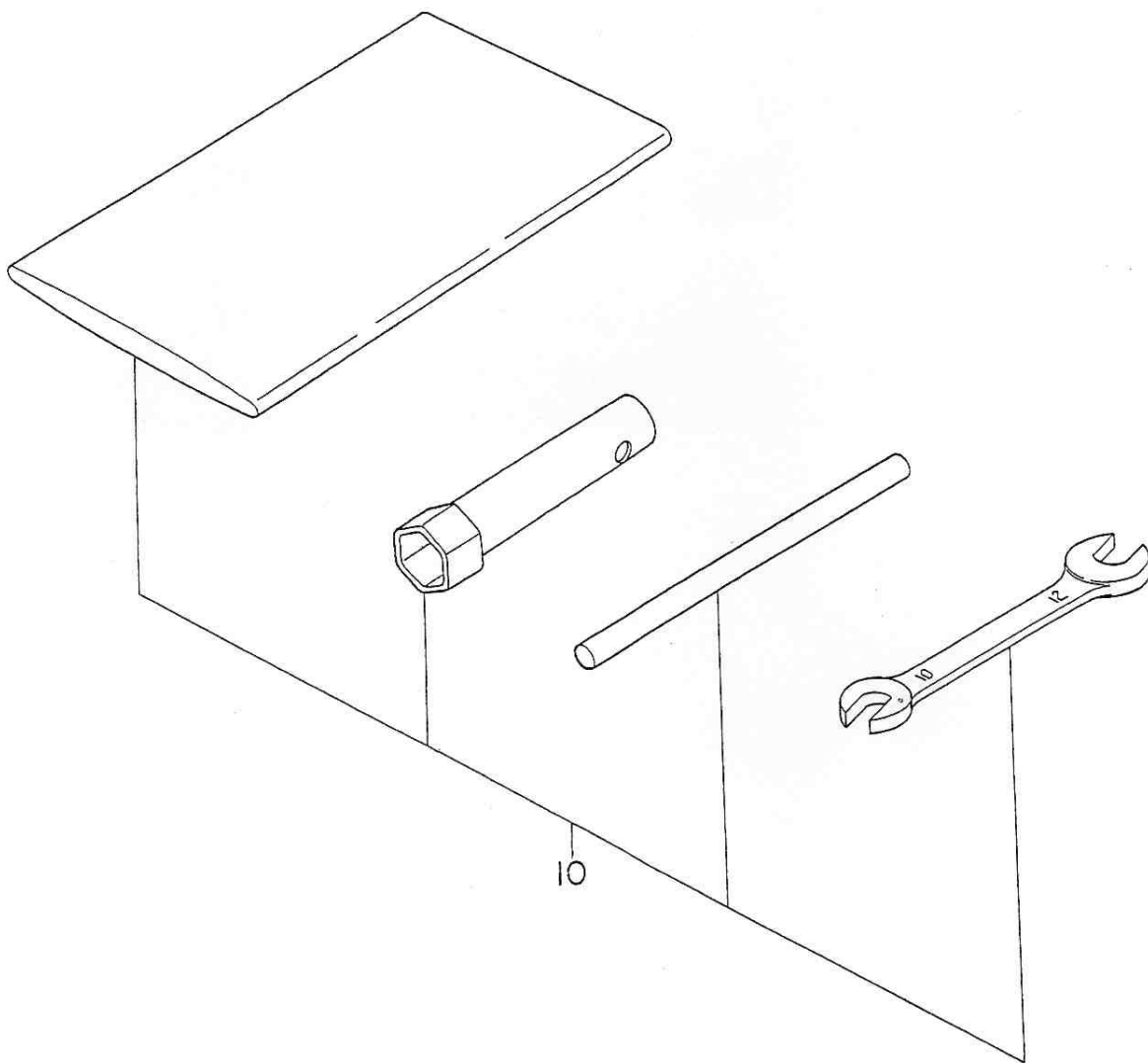


FIG. 5100

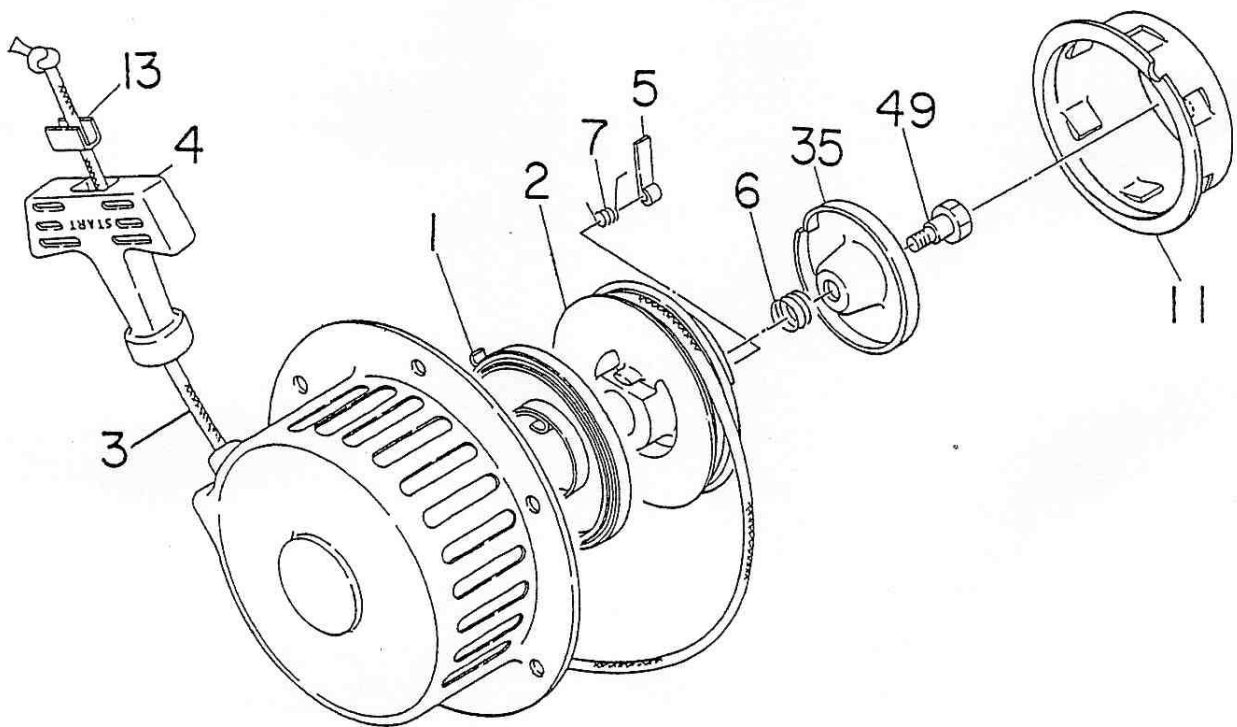
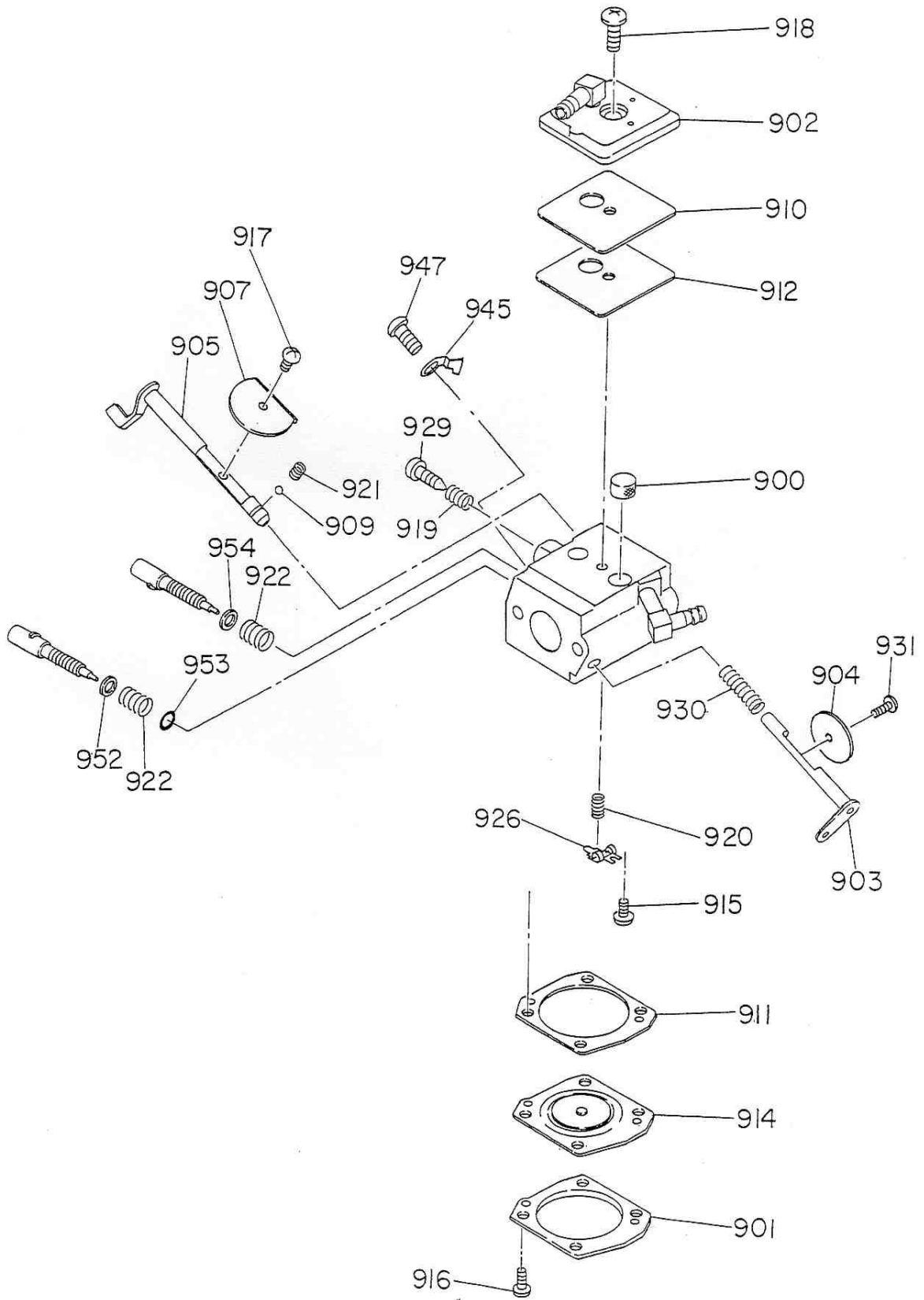


FIG. 6100



61 CARBURETOR AY

REF.	PART NUMBER	PART NAME	QTY	REMARKS	CODE NO. FROM-TO	INTERCHANGEABLE PART NUMBER	UNIT PRICE	FIG
900	501-60040-10	SCREEN	1		-			6100
901	580-61220-60	COVER-METERING DIAPH	1		-			6100
902	580-61220-10	COVER AY-PUMP	1		-			6100
903	580-61221-50	SHAFT AY-THROTTLE	1		-			6100
904	580-61222-60	VALVE-THROTTLE	1		-			6100
905	580-61222-30	SHAFT AY-CHOKE	1		-			6100
907	580-61222-40	VALVE-CHOKE	1		-			6100
909	580-61222-20	BALL	1		-			6100
910	580-61220-30	GASKET-PUMP	1		-			6100
911	580-61221-20	GASKET-METERING DIA.	1		-			6100
912	580-61220-40	DIAPHRAGM-PUMP	1		-			6100
914	580-61221-10	DIAPHRAGM AY-METERIN	1		-			6100
915	501-60041-10	SCREW	1		-			6100
916	501-60041-60	SCREW AY	4		-			6100
917	580-61222-50	SCREW-VALVE	1		-			6100
918	580-61220-20	SCREW-PUMP COVER	1		-			6100
919	541-60361-20	SPRING-IDLE ADJ.	1		-			6100
920	580-61220-50	SPRING-METERING LEVE	1		-			6100
921	580-61222-10	SPRING-CHOKE FRICTIO	1		-			6100
922	580-60801-10	SPRING	2		-			6100
926	580-61221-30	LEVER-METERING	1		-			6100
929	541-60361-30	SCREW-IDLE ADJ.	1		-			6100
930	580-61221-60	SPRING-THROTTLE RET.	1		-			6100
931	580-60842-40	SCREW-VALVE	1		-			6100
945	580-61221-40	STOP-THROTTLE	1		-			6100
947	510-60451-40	SCREW-SHUTTER	1		-			6100
952	521-60060-40	WASHER	1		-			6100
953	521-60060-50	O RING	1		-			6100
954	510-60381-20	WASHER	1		-			6100
	531-60051-50	VALVE NEEDLE	1					