



**Robin Engine**

Model EC10

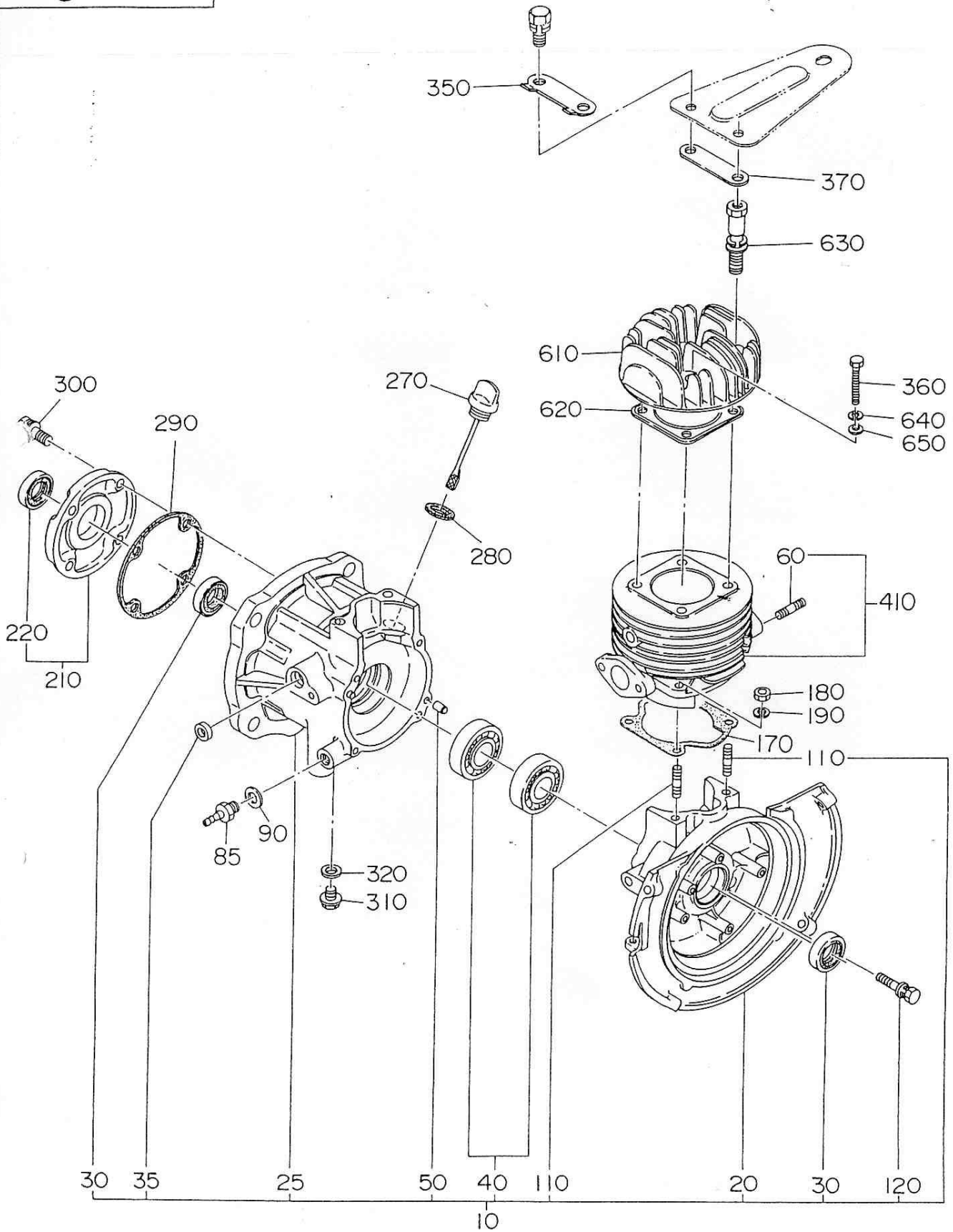
for STONE

# PARTS CATALOG

Spec.No. EC100DD2290

 **富士重工業株式会社**  
**FUJI HEAVY INDUSTRIES LTD.**

Fig. 100



1 CRANKCASE

REF.	PART NUMBER	PART NAME	QTY	REMARKS	CODE NO. FROM-TO	INTERCHANGEABLE PART NUMBER	UNIT PRICE	FIG.	
10	106-10712-01	CRANKCASE CP	1		-			100	
20	106-10121-03	CRANKCASE 1	1		-			100	
25	106-10702-23	CRANKCASE 2	1		-			100	
30	044-02000-10	OIL SEAL	2	TB20328	-			100	
35	044-00800-10	OIL SEAL	1	VC8144	-			100	
40	060-02000-20	BALL BEARING	2	BB6204C3	-			100	
50	031-00600-10	DOWEL PIN	2		-			100	
60	001-31083-01	STUD	2		-			100	
85	050-51000-70	UNION	1		-			100	
90	003-71100-00	GASKET (FIBER)	1		-			100	
110	010-50700-10	STUD	4		-			100	
120	013-00601-00	BOLT AND WASHER AY	4		-			100	
170	106-15001-23	GASKET (CYLINDER)	1		-			100	
180	017-00700-20	NUT	4		-			100	
190	020-30700-10	SPRING WASHER	4		-			100	
210	106-11601-11	CRANKCASE COVER CP	1		-			100	
220	044-02000-30	OIL SEAL	1	TB20328 (HS70)	-			100	
270	106-63606-01	OIL GAUGE CP	1		-			100	
280	021-01600-10	GASKET	1		-			100	
290	106-15002-03	GASKET (CASE COVER)	1		-			100	
300	013-00601-30	BOLT AND WASHER AY	4		-			100	
310	040-10800-11	PLUG	1		-	040-10800-10		100	
320	021-00800-10	GASKET	1		-			100	
350	105-65101-21	LOCK WASHER CP	1		-			100	
360	010-30800-10	BOLT	2		-			100	
370	106-35302-01	SPACER CP	1		-			100	
410	106-12407-01	CYLINDER CP	1		-	106-12409-01		100	
610	106-13001-13	CYLINDER HEAD	1		-			100	
620	106-15101-11	GASKET CP (HEAD)	1		-			100	
630	013-00800-71	BOLT AND WASHER AY	2		-			100	
640	003-20080-00	SPRING WASHER	2		-			100	
650	003-10080-00	WASHER	2		-			100	
960	106-99001-17	GASKET SET	1		-			100	
		Incl. FIG. 100-170, 280, 290, 620 FIG. 300-340, 550							

92/06/23

P. 2

EC100DD2290 D-REC. STONE TCI

Fig. 200

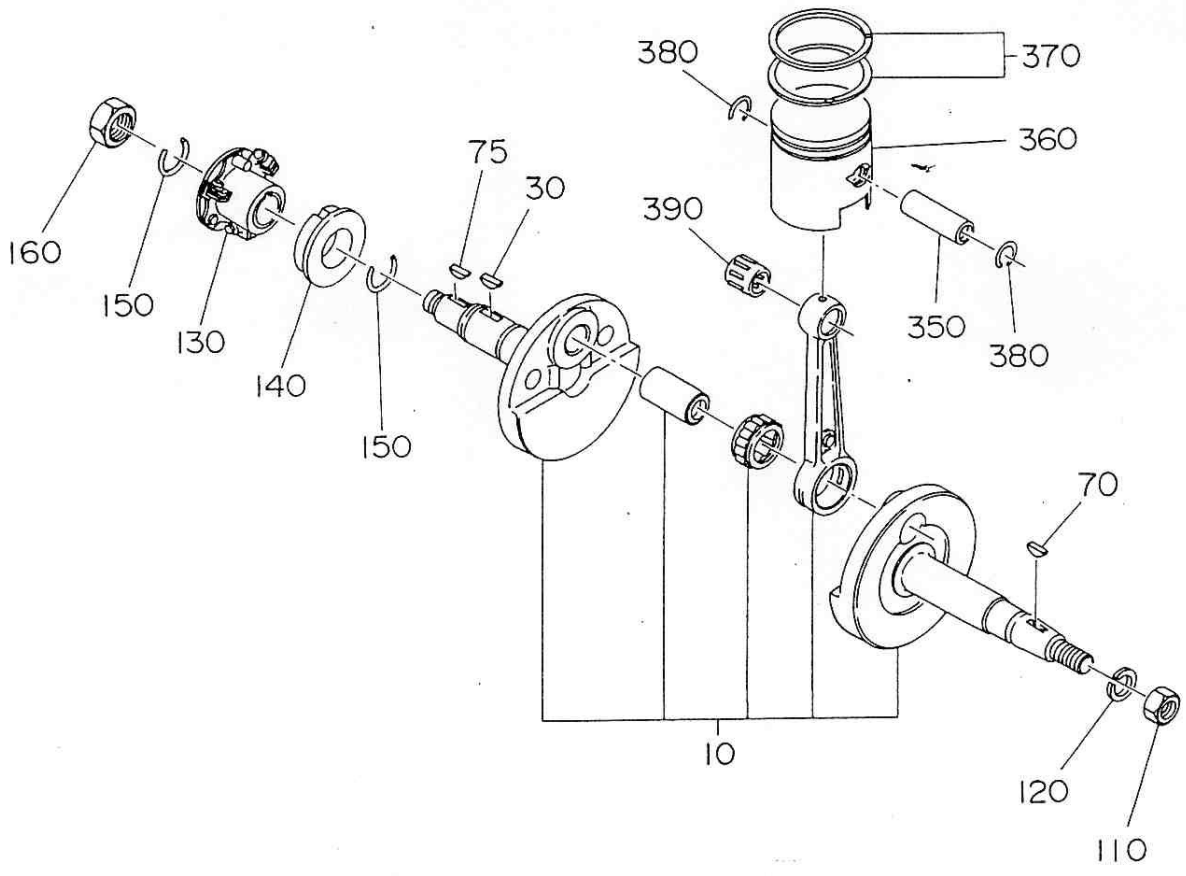




Fig. 300

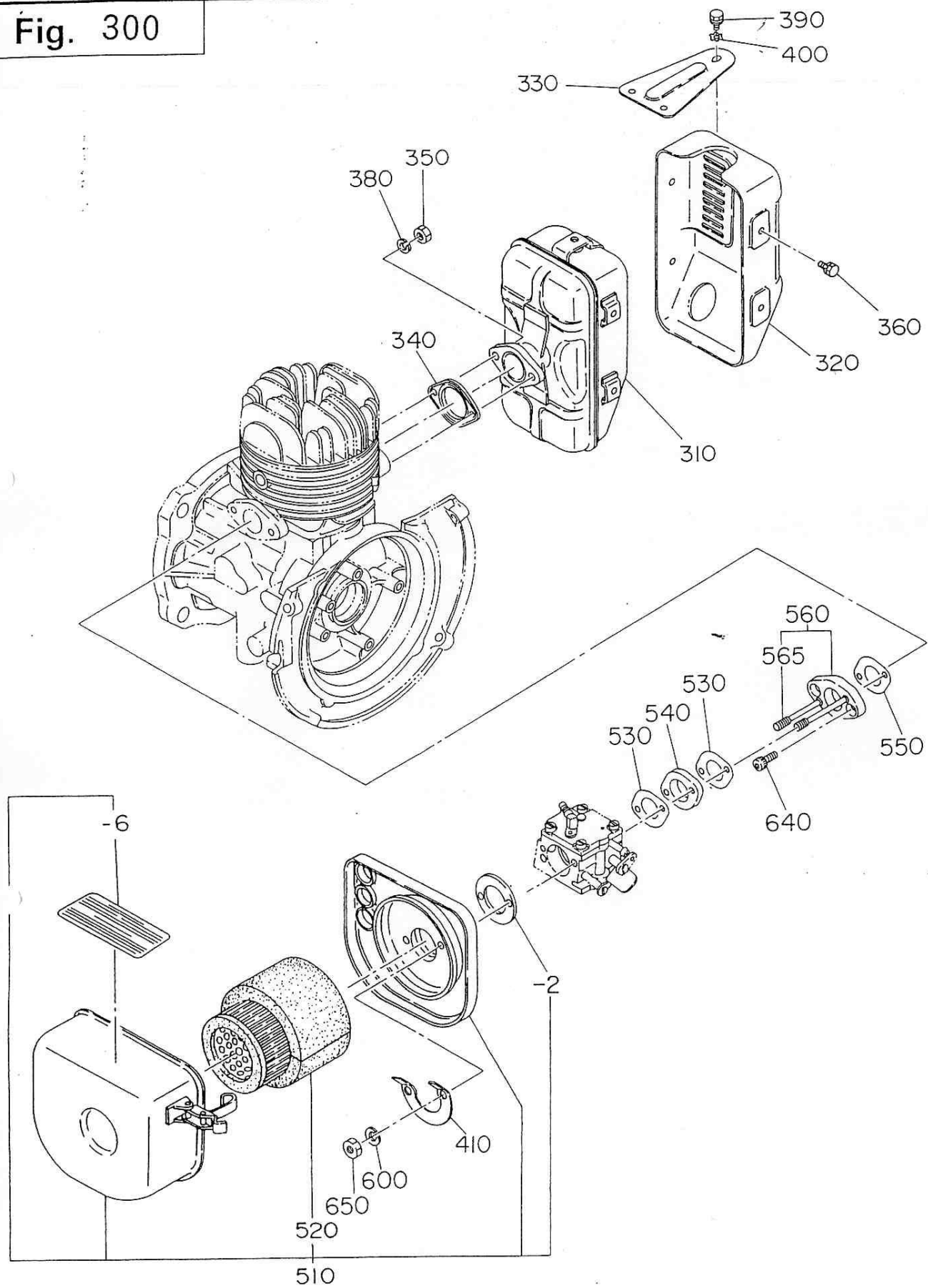




Fig. 400

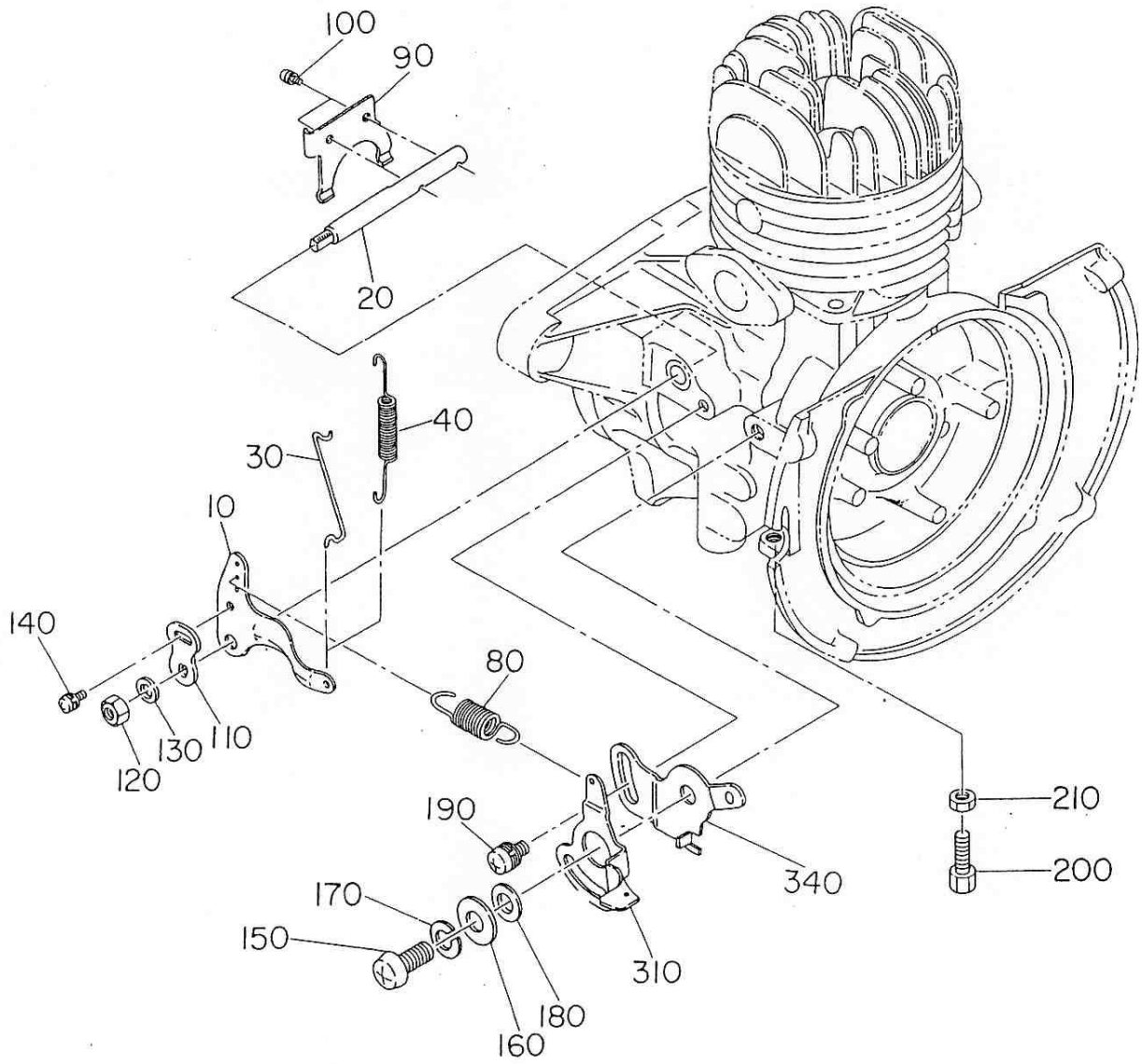




Fig. 500

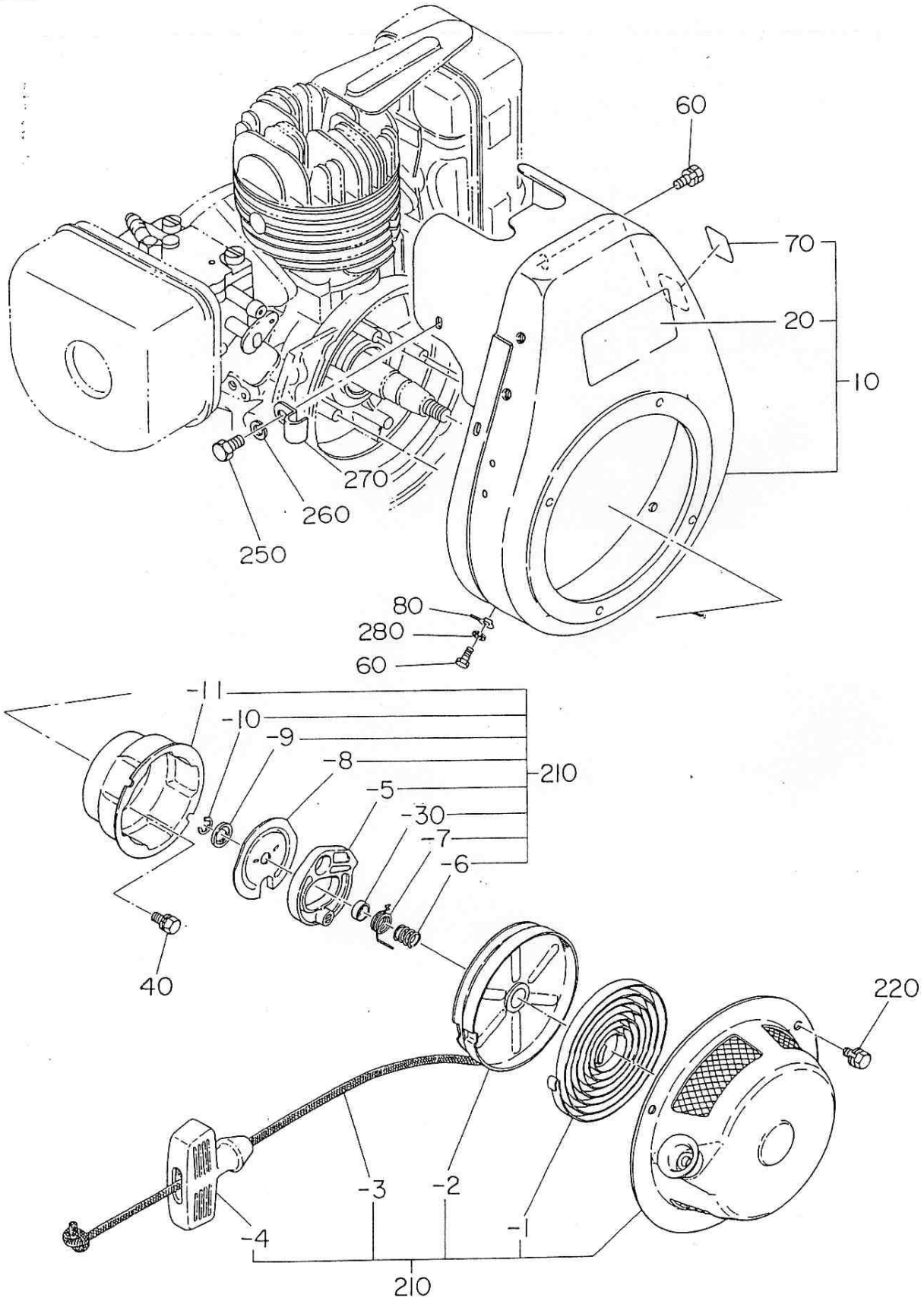
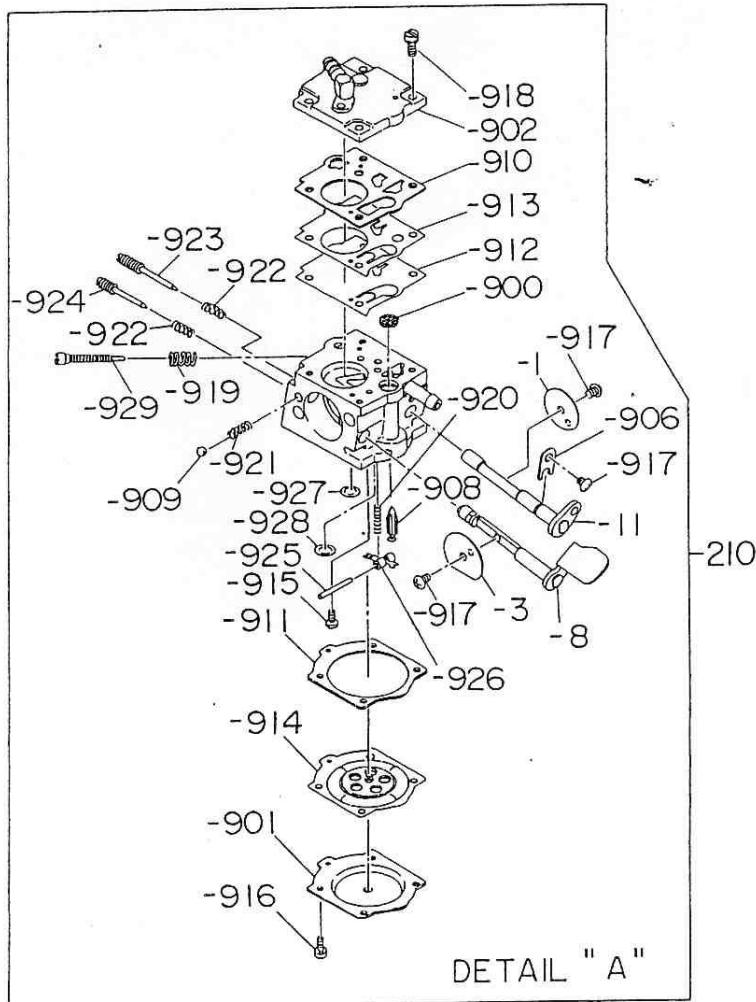
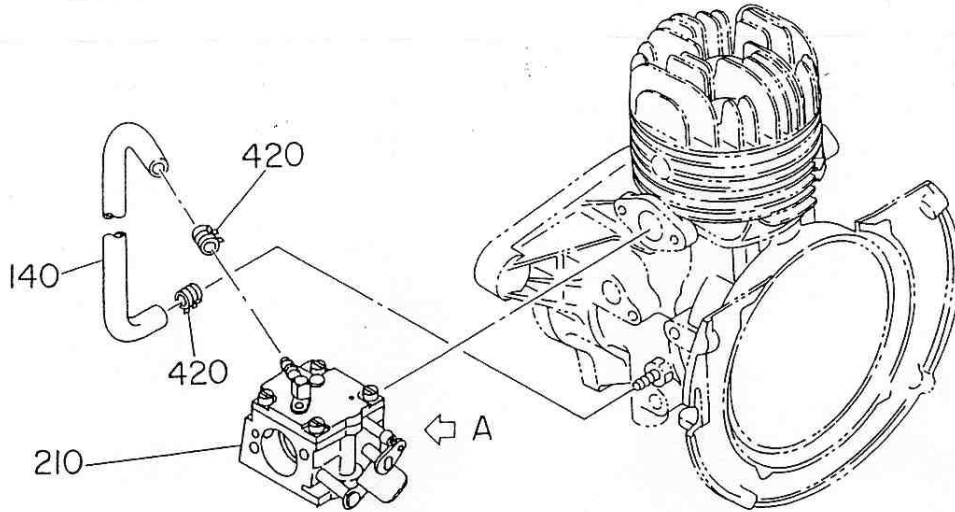




Fig. 630



## 6 FUEL, LUBRICANT

REF.	PART NUMBER	PART NAME	QTY	REMARKS	CODE NO. FROM-TO	INTERCHANGEABLE PART NUMBER	UNIT PRICE	FIG.
140	085-14500-00	R PIPE, 4.5X9XM	1	4.5X9X210	-			630
210	106-62561-10	CARBURETOR AY	1		1582-			630
	106-62561-00	CARBURETOR AY	1		-1581	106-62561-10		630
- 1	106-62564-08	VALVE (THROTTLE)	1		-			630
- 3	106-62567-08	VALVE (CHOKE)	1		-			630
- 8	106-62565-08	SHAFT AY (CHOKE)	1		-			630
- 11	106-62563-08	SHAFT AY (THROTTLE)	1		-			630
-900	106-62560-08	SCREEN	1		-			630
-901	106-62561-08	COVER	1		-			630
-902	106-62562-08	COVER AY	1		-			630
-906	106-62566-08	CLIP	1		-			630
-908	106-62568-18	VALVE, INLET NEEDLE	1		-			630
-909	106-62569-08	BALL	1		-			630
-910	106-62570-08	GASKET (FUEL PUMP)	1		-			630
-911	106-62571-08	GASKET	1		-			630
-912	106-62572-08	DIAPHRAGM(FUEL PUMP)	1		-			630
-913	106-62573-08	DIAPHRAGM(CHECKVALVE)	1		-			630
-914	106-62574-08	DIAPHRAGM AY	1		-			630
-915	106-62575-08	SCREW	1		-			630
-916	106-62576-08	SCREW AY	4		-			630
-917	106-62577-08	SCREW (VALVE)	3		-			630
-918	106-62578-08	SCREW (PUMP COVER)	4		-			630
-919	106-62579-08	SPRING (IDLE)	1		-			630
-920	106-62580-08	SPRING (METERING)	1		-			630
-921	106-62581-08	SPRING (CHOKE)	1		-			630
-922	106-62582-08	SPRING (NEEDLE)	2		-			630
-923	106-62583-08	NEEDLE (IDLE)	1		-			630
-924	106-62584-08	NEEDLE (HIGH SPEED)	1		-			630
-925	106-62585-08	PIN	1		-			630
-926	106-62586-08	LEVER (METERING)	1		-			630
-927	106-62587-08	PLUG (3/8)	1		-			630
-928	106-62588-08	PLUG (5/16)	1		-			630
-929	106-62589-08	SCREW (IDLE ADJUST)	1		-			630
420	056-10800-20	HOSE CLAMP	2		-			630

92/06/23

P. 12

EC100DD2290 D-REC, STONE TCI

Fig. 700

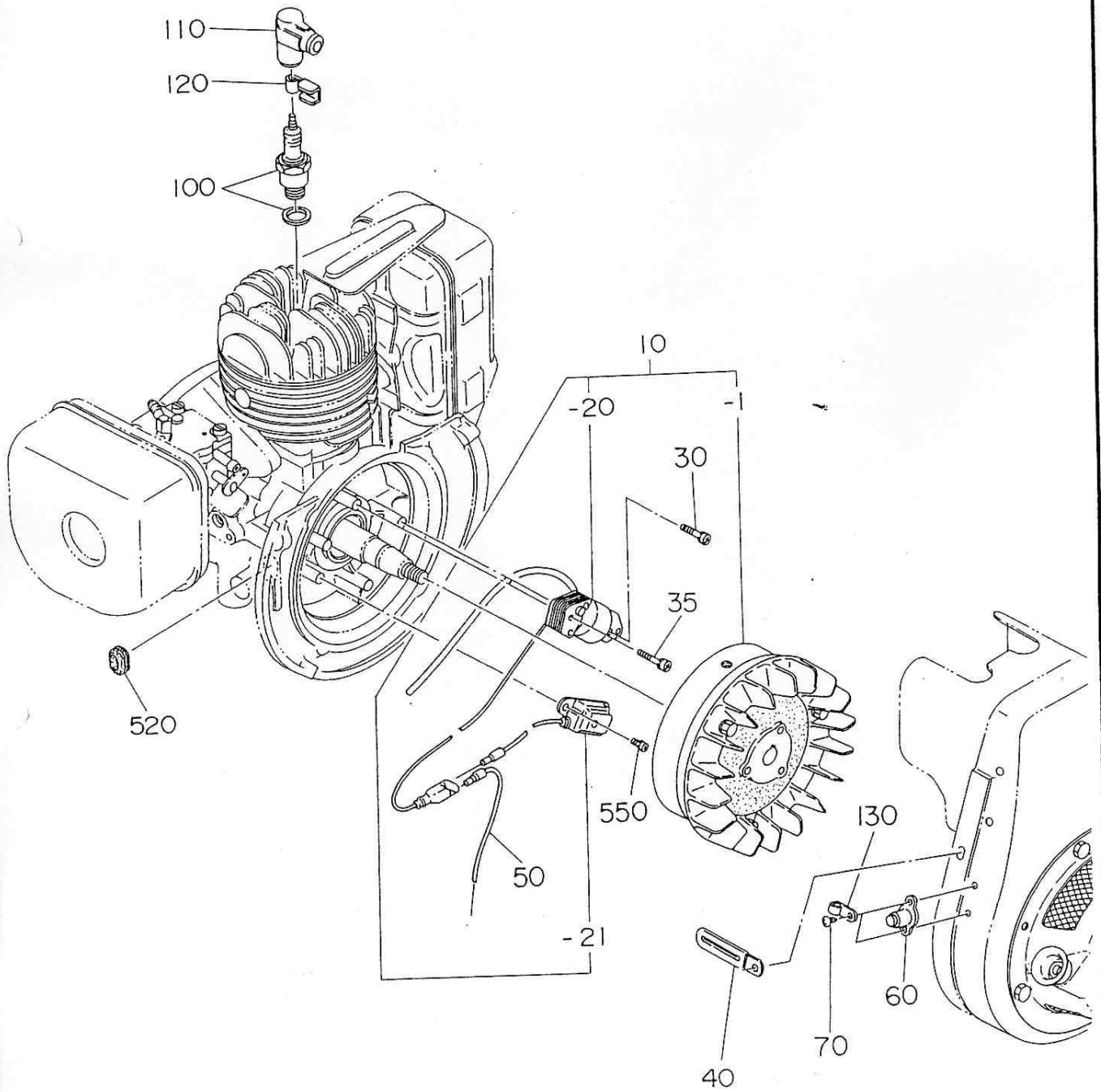




Fig. 900

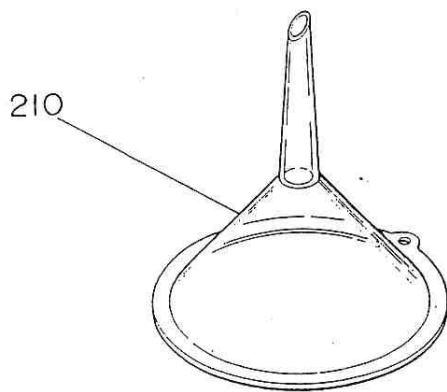
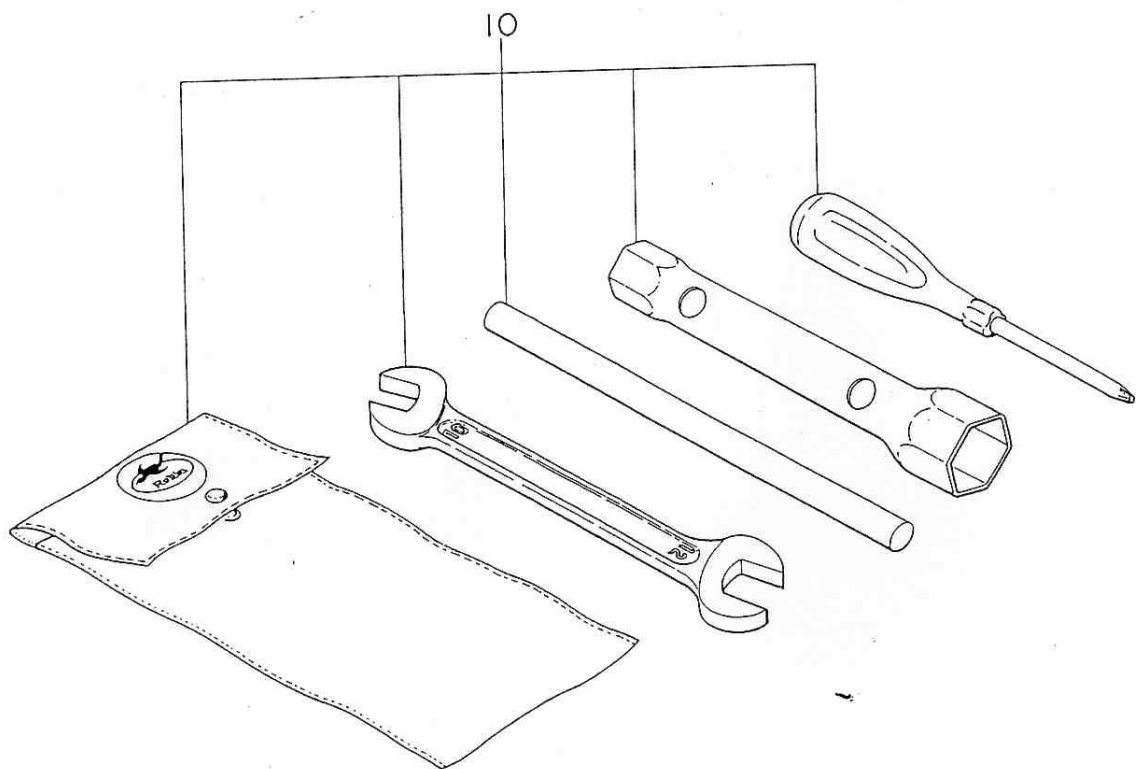




Fig. 1000

