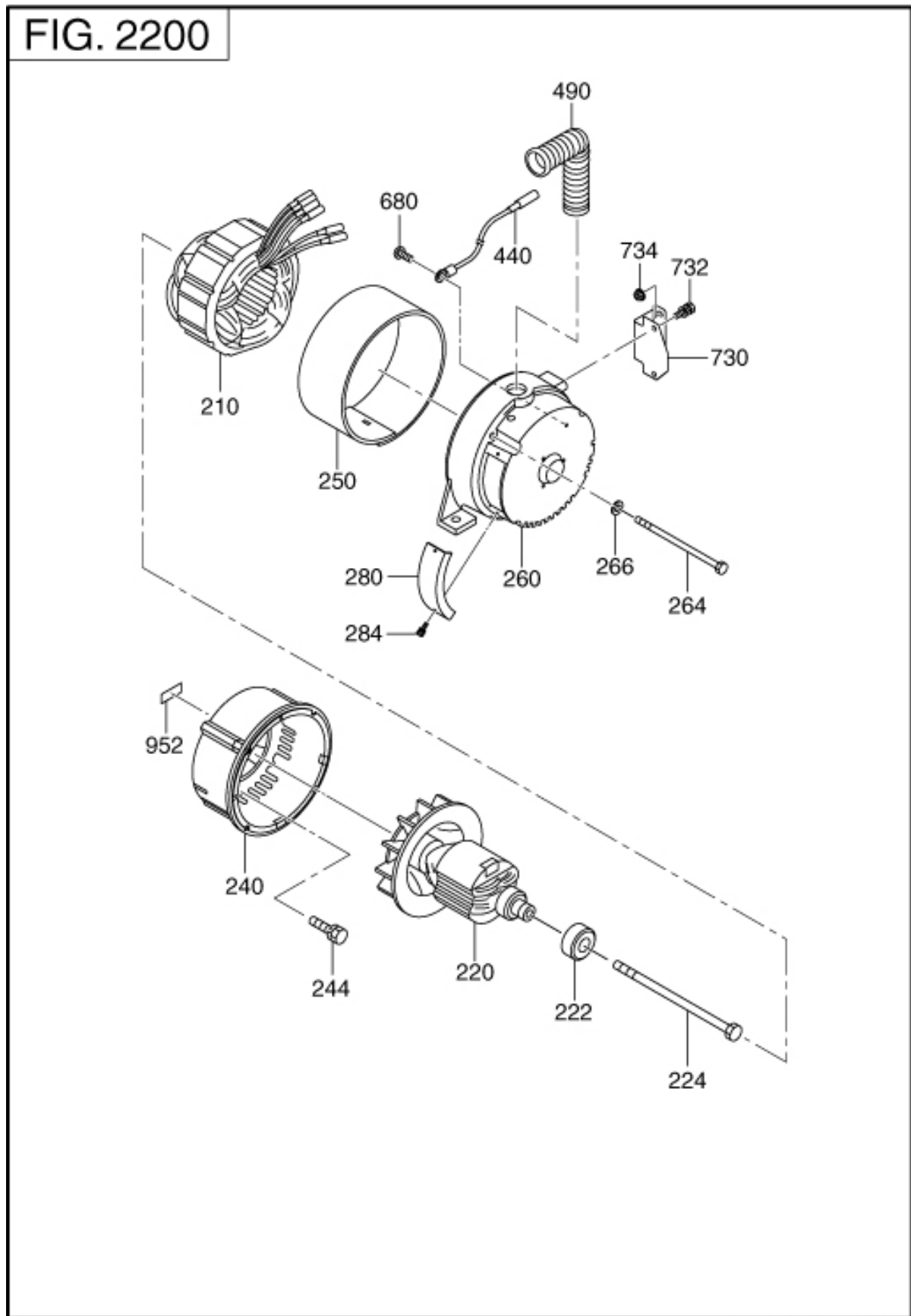


22 GENERATOR



| REF. | PART NUMBER | PART NAME | CODE NO. | QTY | REMARKS | INTERCHANGE |
|------|--------------|-------------------|----------|-----|--------------------|-------------|
| 210 | 35C-51009-01 | STATOR CP | - | 1 | | |
| 220 | 35C-51010-01 | ROTOR CP | - | 1 | | |
| 222 | 35C-55001-01 | BEARING | - | 1 | | |
| 224 | 35C-54001-01 | THROUGH BOLT | - | 1 | | |
| 240 | 35C-52001-01 | FRONT COVER | - | 1 | | |
| 244 | 359-59935-08 | BOLT & WASHER AY | - | 4 | | |
| 250 | 35C-55012-01 | STATOR COVER | - | 1 | | |
| 260 | 35C-52002-01 | REAR COVER | - | 1 | | |
| 264 | 35C-54002-01 | COVER BOLT | - | 4 | | |
| 266 | 003-20080-00 | SPRING WASHER | - | 4 | 8. 2DX15. 4DX2T | |
| 280 | 354-54513-08 | BRUSH COVER | - | 1 | | |
| 284 | 30A-71202-03 | SCREW & WASHER AY | - | 2 | | |
| 490 | 353-57506-18 | BUSHING | - | 1 | | |
| 730 | 35C-63001-01 | MUFFLER BRACKET | - | 1 | | |
| 732 | 359-59935-08 | BOLT & WASHER AY | - | 2 | | |
| 734 | 002-38080-00 | FLANGE NUT | - | 2 | M8X1. 25X17DX7. 5H | |