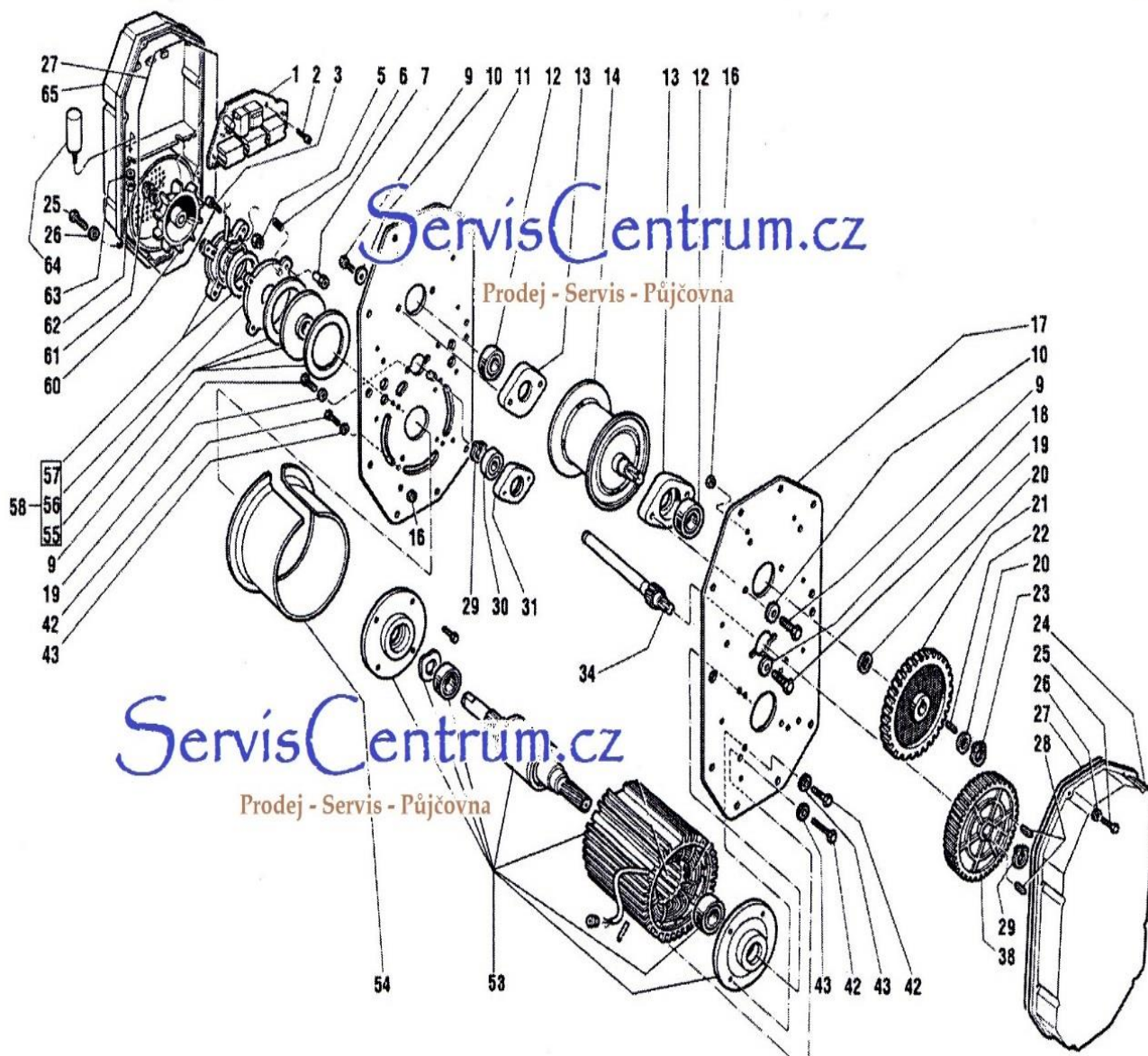


Výkres náhradních dílu na vrátky modelu 304 – 354 od výrobců

Haemmerlin a **Wiskehrs**

Výkres na vrátky, modely 304 - 354 . Motor a komponenty

1



Objednávací kódy na vrátky 304 - 354

REF	CODE	DESCRIPTION	OBSERV	MODEL	
1	900211 900306	CONNECTION STRIP 10mm + + RECTIFIER	110V/220V	204/304	
	901128	PLATE ELECT. 110V/24V 2 COND.	110V	204F/354/300/400/500/1000	
	901328	PLATE ELECT. 220V/24V 2 COND.	220V	204F/354/300/400/500/1000	
	900307 900320 900322 900324 900356	RECTIFICADOR KBPC1510 CONTACTOR PLATE BORNAS PORTAFUSIBLES AEREO TRANSFORMER 220/380V-24V	220-380V	504	
	2	700072	SCREW 3.9x9.5 C /ANCHA		204F/354/300/400/500/504/1000
	3	700069	SCREW ALLEN 912 6x20		ALL
5	700111	LOCK NUT 985 M6		ALL	
6	630304	BRAKE SPRING		ALL	
7	310592	EXT. BRAKE SPRING BUSHING		ALL	
9	700031	SCREW 933 M-10x20		ALL	
10	700401	WASHER DIN-9021 10MM.		ALL	
11	300335	RIGHT SIDE		ALL	
12	800016	BEARING 6006 2RS		ALL	
13	312401	BEARING SUPPORT D=55 E=12.5		ALL	
14	302237	REEL D=100 L=102		204/304	
	302337	REEL D=115 L=142		204F/354	
	302537	REEL D=115 L=216		300/400/500/1000	
	302737	REEL D=140 L=216		504	
16	700101	NUT 934 M-5		ALL	
17	300336	LEFT SIDE		ALL	
18	700206	FLAT BEV. WASHER.DIN-125 10MM		ALL	
19	700031	SCREW 933 M-10x20		ALL	
20	312340	BUSHING De=25 L=5		204	
21	302325	WHEEL De=185.99 e=25	50-60Hz 60Hz	304 204	
	302328	WHEEL De=176,55 e=15	50Hz	204	
	302336	WHEEL De=168,44 e=25	50Hz	204F	
	302330	WHEEL De=180,14 e=25	50Hz 60Hz	354 300	
	302334	WHEEL De=176,25 e=25	50Hz	300	
	302348	WHEEL De=184.05 e=25 TEMP	50Hz	400	
	302333	WHEEL De=185.99 e=25 TEMP	50-60Hz 60Hz	500/1000 400	
	302430	WHEEL De=180,14 e=25 TEMP	50-60Hz	504	
22	700705	COTTER 6x6x25		204/304	
23	700604	EXT. COTTER PIN 471 E-20		ALL	
24	820329	GEAR SHELL		ALL	
25	700004	SCREW 933 M-5x20		ALL	
26	700201	FLAT BEV. WASHER -125 5MM.		ALL	
28	700708	COOTER 6x6x15		204/304	
	700703	COOTER 6x6x28		204F/354/300/400/500/504/1000	
29	700604	EXT. CTTEOR PIN 471 E-20		ALL	
30	800014	BEAR12RS NG 6004		ALL	
31	312402	BEARING SUPPORT D=42 E=12.5		ALL	
34	312345	PINION SHAFT De=29,06 L=210	50-60Hz 60Hz	304 204	
	312328	PINION SHAFT De=38,50 L=210	50Hz	204	
	312336	PINION SHAFT De=46,61 L=259	50Hz	204F	
	312330	PINION SHAFT De=34,90 L=259	50Hz	354	
	312337	PINION SHAFT De=34,90 L=210	60Hz	204	
	312334	PINION SHAFT De=39,81 L=333	50Hz	300	
	312338	PINION SHAFT De=34,90 L=333	60Hz	300	
	312348	PINION SHAFT De=31,01 L=333	50Hz	400	
	312332	PINION SHAFT De=29,05 L=333	50-60Hz 60Hz	500/1000 400	

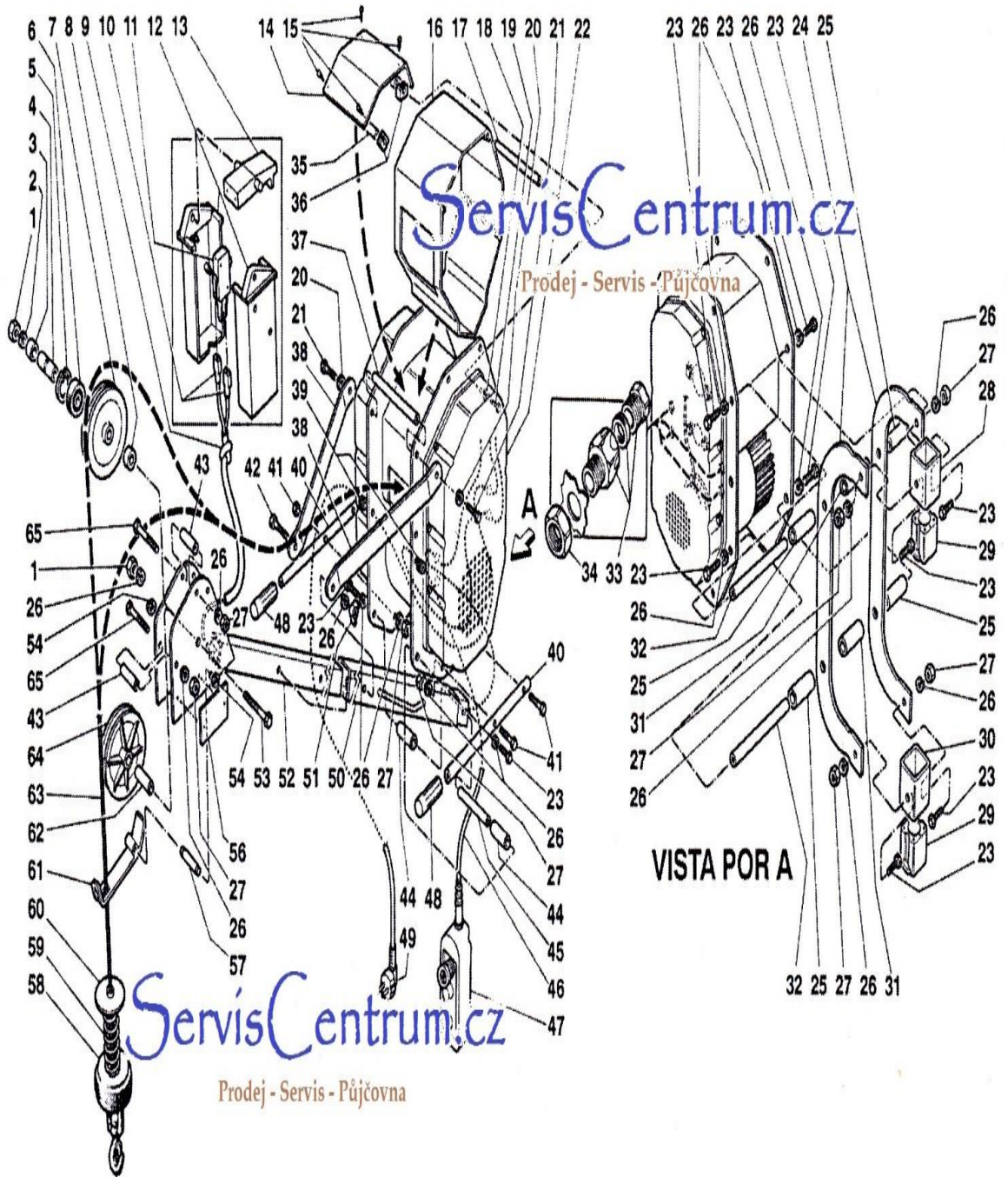
	312430	PINION SHAFT 3 Z=14 L=333 TEMP	50-60Hz	504
38	302226	NYLON WHEEL De=189.07 e=18		204/304
	302326	NYLON WHEEL De=189.07 e=25		204F/354/300/400/500/1000
	302416	WHEEL 2 De=189.37 e=29 HD		504
42	700100	SCREW 933 TAPTITE M-6x12		ALL
43	700411	WASHER 6768 m6		304
53	900561/1	MOTOR 1CV		204/304
	902571/1	MOTOR 2CV		204F/354
	900611/1	MOTOR 3CV		300/400/500/1000
	900711	MOTOR 4CV		504
54	820325	COOLING TUBE		ALL
55	902529	FERODO DISC		ALL
56	310559	EXT. BRAKE WASHER		ALL
57	300559	COIL REEL	220V	ALL
	300558	COIL REEL	110V	ALL
58	900559	EXTERNAL BREAK 220V	220V	ALL
	900558	EXTERNAL BREAK 110V	110V	ALL
60	820201	SHAFT FAN 20		ALL
	700604	COTTER PIN 471 E-20		ALL
	700104	NUT 934 M-8		ALL
63	700412	WASHER 6798 m8		ALL
64	900414	CAPACITOR 100µF/450V (x2)	110V/50Hz	
	900405	CAPACITOR 50µF/450V (x1)	220V/50Hz	204/304
	900407	CAPACITOR 80µF/450V (x2)	110V/60Hz	
	900401	CAPACITOR 40µF/450V (x1)	220V/60Hz	
	900412	CAPACITOR (A) 60µF/450V (x2)+	110V/50Hz	
	900407	CAPACITOR (P) 80µF/450V (x3)		
	900400	CAPACITOR (A) 30µF/450V (x1)+	220V/50Hz	204F/354
	900412	CAPACITOR (P) 60µF/450V (x1)		
	900414	CAPACITOR (A) 100µF/450V (x1)+	110V/60Hz	
	900414	CAPACITOR (P) 100µF/450V (x2)		
	900400	CAPACITOR (A) 30µF/450V (x1)+	220V/60Hz	
	900405	CAPACITOR (P) 50µF/450V (x1)		
	900412	CAPACITOR (A) 60µF/450V (x2)+	110V/50Hz	
	900407	CAPACITOR (P) 80µF/450V (x1)+		
	900414	CAPACITOR (P) 100µF/450V (x2)		
900400	CAPACITOR (A) 30µF/450V (x1)+	220V/50Hz	300/400/500/1000	
900409	CAPACITOR (P) 70µF/450V (x1)			
900414	CAPACITOR (A) 100µF/450V (x1)+	110V/60Hz		
900407	CAPACITOR (P) 80µF/450V (x3)			
900400	CAPACITOR (A) 30µF/450V (x1)+	220V/60Hz		
900412	CAPACITOR (P) 60µF/450V (x1)			
65	820328	COOLING HOUSING		ALL

ServisCentrum.cz

Prodej - Servis - Půjčovna

ServisCentrum.cz

Prodej - Servis - Půjčovna



COMPOSITION OF SERIES

REF.	CODE	DESCRIPTION	MODEL
1	700116	NUT 934 M-14	304/354
2	700306	GROWER WASHER 7980 14MM	304/354
3	310322	PULLEY BUSHING De=25 L=13.5	354
4	310323	PULLEY ROTATION BUSHING	354
5	700616	COTTER PIN I-52	354
6	800024	BEARING 6304 2RS	354
7	302323	HD SERIES STEEL PULLEY	354
8	310321	PULLEY BUSHING De=25 L=11.5	354
9	900010	FLEXIBLE CABLE 2x1	304/354
10	900208	TEMPER TERMINAL	304/354
11	900361	MICRO END OF TRAVEL	304/354
12	820341	E.OF T. SUPPORT BOX.	304/354
13	820342	END OF TRAVEL ROCKER	304/354
14	302227	REEL CASING	304
	700064	SCREW 7971 4.8x22.	304
16	820327	REEL CASING	354
17	310404	SEPARATOR D=14 L=186 M-8	354
18	700303	GROWER WASHER 7980 8MM.	304/354
19	700021	SCREW 933 M-8x20	304/354
20	700202	FLAT BEV. WASHER 125 8MM	304
	700304		354
21	700021	SCREW 933 M-8x20	304
	700032		354
22		DRIVING UNIT	304/354
23	700031	SCREW 933 M-10x20	304/354
24	300347	CHASSIS STRIP	304/354
25	822421	CHASSIS SIDE BUSHING	304
26	700304	GROWER WASHER 7980 10MM	304/354
27	700105	NUT 934 M-10	304/354
28	300254	TOP PILLAR BUSHING SUPPORT	304/354
29	820423	CHASSIS ROTATION BUSHING	304/354
30	300253	BOTTOM PILLAR BUSHING SUPPORT	304/354
31	820422	CHASSIS CENTRE BUSHING	304/354
32	312405	SEPARATOR D=20 L=146 M-10	304
	310405		354
33	900210	PACKING GLAND PG-11	304/354
34	900214	PLASTIC NUT PG-11	304/354
	310406	SEPARATOR D=14 L=146 M-8	304
	822328	REEL CASING CLAMP	304
37	310406	SEPARATOR D=14 L=146 M-8	304
	310403		354
38	300345	TIE	304/354
39	840009	CABLE GLAND REF. 302	304/354
40	302350	SUPPORT TUBE	304/354
41	700084	SCREW 933 M-10x35	304/354
42	700034	SCREW 931 M-10x70	304/354
43	310303	DERRICK HEAD SEPARATOR 14	304/354
44	822420	DERRICK BUSHING	304
	820420		354
45	312405	SEPARATOR D=20 L=146	304/354

REF.	CODE	DESCRIPTION	MODEL
47	900395	PUSHBUTTON PANEL W5	304/354
48	824002	GRIP	304/354
49	900051	CONNECTION	304/354
50	300344	EXTERNAL TUBE, DERRICK	304/354
51	700150	BUTTERFLY NUT M-10	304/354
52	300343	DERRICK	304/354
53	700050	SCREW 931 M-14x60	304/354
54	700404	WASHER 6799 9MM.	304
56	500038	MAXIMUM LOAD PLATE 300KG.	304
	500027	MAXIMUM LOAD PLATE 350KG.	354
57	310304	DERRICK HEAD BOLT	304/354
58	312321	STEEL COUNTERWEIGHT	304/354
59	630303	END OF TRAVEL SPRING	304/354
60	820006	NYLON DISC, E. OF T. SHAFT 16	304/354
61	302341	END OF TRAVEL	304/354
62	310500	PULLEY ROTATION BUSHING	304
63	830525	SLING 5x25	304
	830533	SLING 5x33	354
64	820500	DERRICK PULLEY	304
65	700033	SCREW 931 M-10x60	304/354