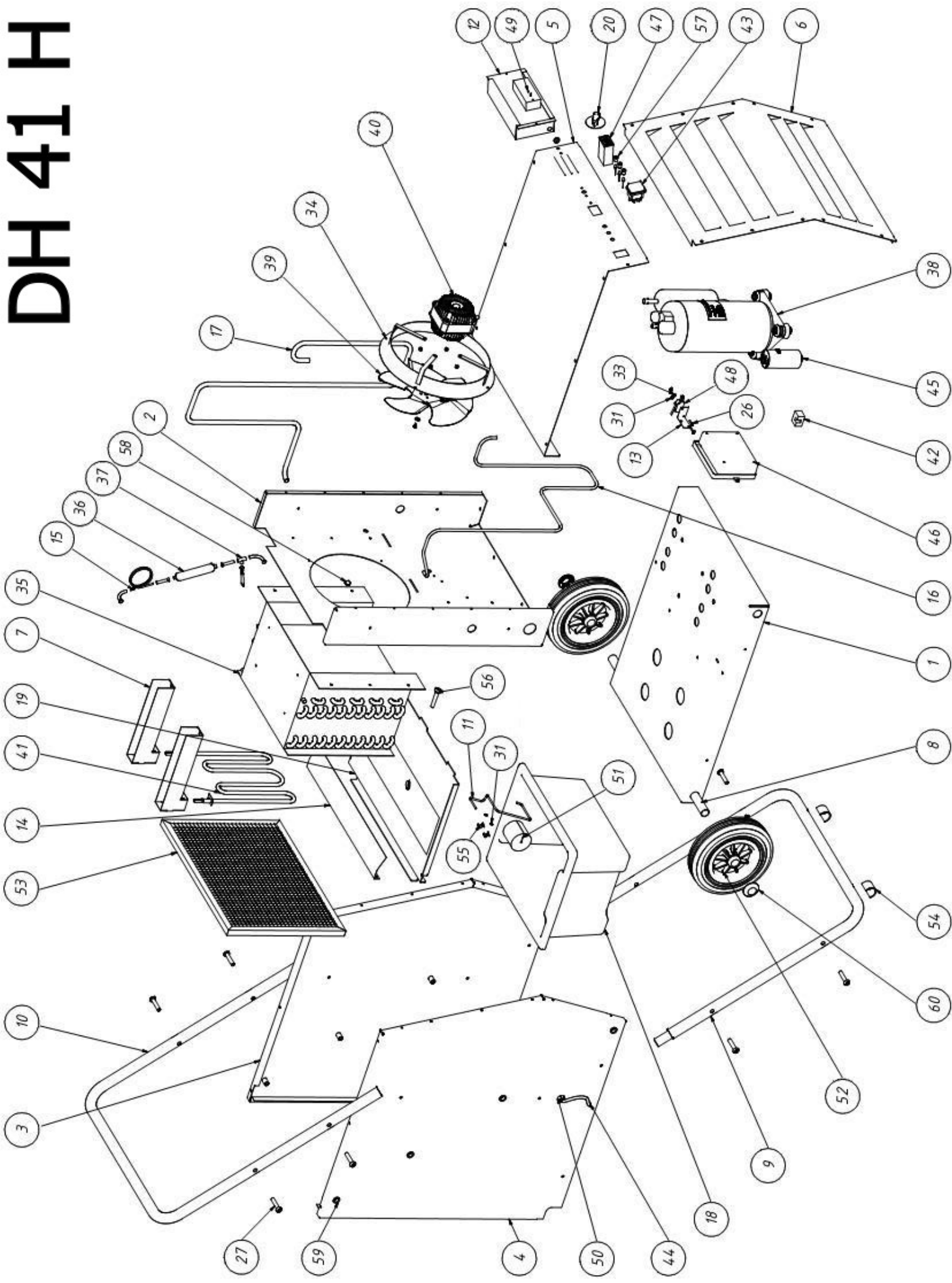


DH 41 H



Position	Description	Q [^] ty	Code
1	Box Angle Plate	1	S/R
2	Middle Spacer Panel	1	S/R
3	Left Panel	1	S/R
4	Right Panel	1	S/R
5	Top Panel	1	S/R
6	Front Panel	1	S/R
7	Heating Element Holder	2	S/R
8	Axle	1	4513.109
9	Handle Down Element	1	4513.110
10	Handle Top Element	1	4513.111
11	Float Arm	1	4513.112
12	Hygrostat Shield	1	4513.113
13	Switch Holder	1	4513.114
14	Heat Shield	1	S/R
15	Capillary 1,8 X 3	1	4513.202
16	Copper Tube 6X0,8	1	4513.203
17	Copper Tube 3/8" X 0,8	1	4513.204
18	Container 10 L	1	4513.601
19	Liquids Tray	1	4513.602
20	Knob	1	4510.610
26	Screw M3X16	2	4513.802
27	Hexagon Screw M8X40	8	4513.804
31	Washer A3,2	4	4513.808
33	Spring Lock Washer	1	4510.810
34	Metal Ring For Fun	1	4513.120
35	Heat Exchanger 2Kw+2,5Kw	1	S/R
36	Filter Dryer	1	4513.205
37	Three-Way Pipe 6Mm	1	4513.207
38	Rotary Compressor 2 kW	1	S/R
39	Fan 230/26°	1	4513.301
40	Electric Motor 16W/230V	1	4510.307
41	Heating Element 1666W	1	4510.359
42	Screw Terminal Block 2X32A/380V	1	4510.421
43	Switch	1	4513.408
44	Supply Cord With Plug	1	4510.427
45	Condenser 25Uf/450V	1	4513.400
46	Controler H (+Leds)	1	4513.404
47	Moto Hours Meter	1	4513.405
48	Microswitch 16A 230V	1	4513.406
49	Humidity Controller	1	4513.407
50	Strain Relief Bushing	1	4510.605
51	Float	1	4513.603
52	Wheel 200 Mm	2	4513.604
53	Air Filter	1	4513.605
54	Slipper 24-26	2	4513.607
55	Floats Holder	2	4513.609
56	Gromnet Sleeves 14,3X5,1	1	4513.611
57	Led Holder	3	4513.613
58	Packing With Membrane	2	4513.612
59	Knurling Drive Cap M8	8	4513.800
60	Wheel Cap 20Mm	2	4513.803

S/R – parts on special request only