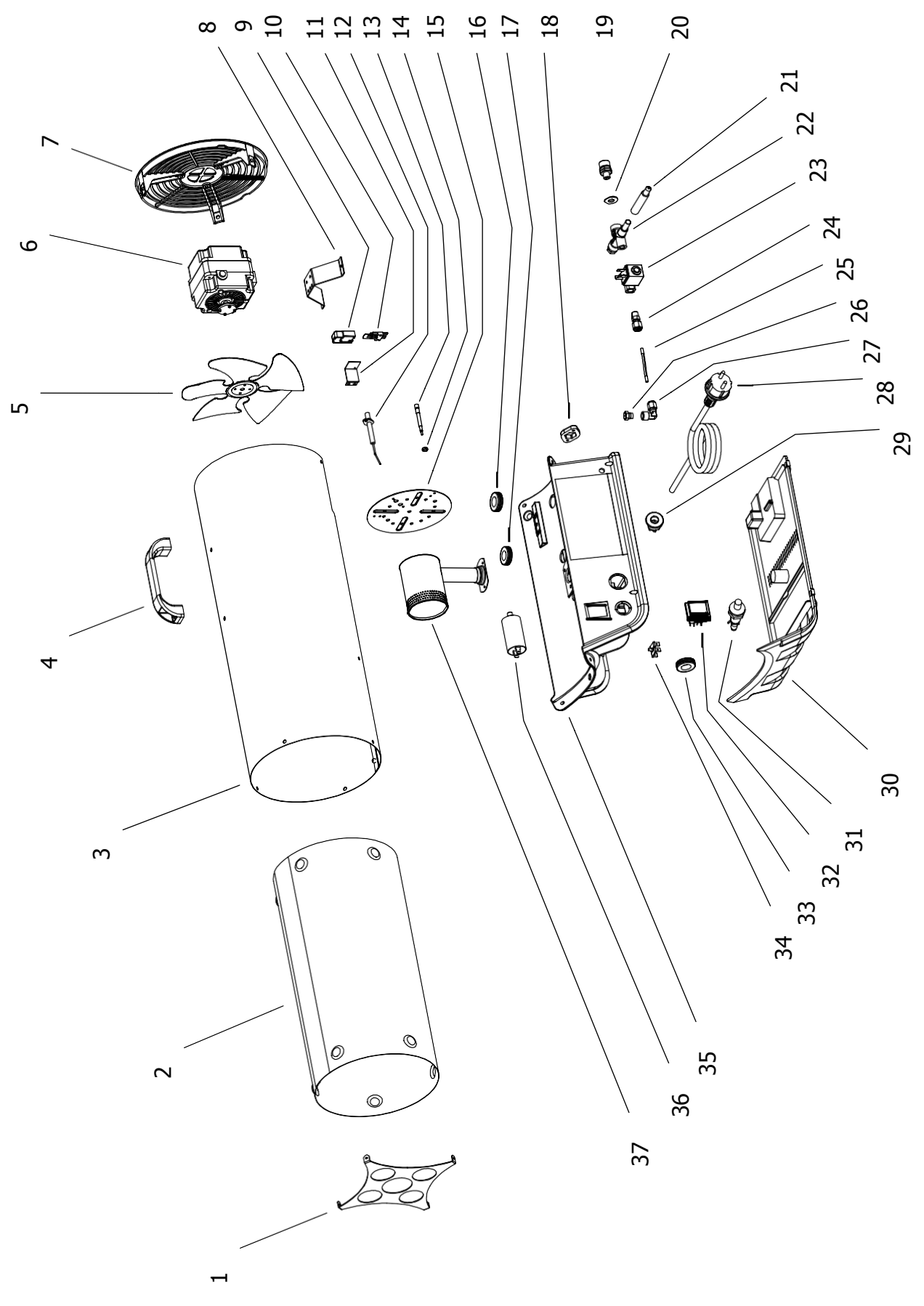


# BLP 33 M MODEL 2012

UNIT 1

ILLUSTRATED PARTS BREAKDOWN

Edizione 2012  
Rev. A



Pos.	Code NR	Description
1	4160.764	OUTLET GRID
2	4161.373	COMBUSTION CHAMBER
3	4162.890	COVER
4	4162.893	PLASTIC HANDLE
5	4161.175	FAN
6	4160.045	MOTOR
7	4161.863	PLASTIC INLET GRID
8	4161.177	MOTOR BRACKET
9	4162.909	SAFETY THERMOSTAT COVER
10	4162.910	SAFETY THERMOSTAT
11	4106.047	SUPPORT FOR THERMOSTAT
12	4160.731	IGNITION ELECTRICAL FOLDER
13	4106.041	INTERRUPTED THERMOCOUPLE
14	4106.043	THERMOCOUPLE NUT
15	4160.726	BURNER PLATE
16	4160.646	GROMMET
17	4160.646	GROMMET
18	4161.854	BLOCK FOR NOZZLE
19	4160.048	GAS INLET NOZZLE
20	4160.283	WASHER
21	4162.885	VALVE ROD
22	4161.137	SAFETY VALVE
23	4160.562	ELECTROVALVE
24	4160.623	NIPPLES REDUCER
25	4162.886	COPPER TUBE
26	4162.887	GAS NOZZLE
27	4160.621	ELBOW
28	4160.539	POWER CORD
29	4160.635	KEEPER WIRE
30	4162.883	LOWER PLASTIC BASE
31	4162.222	PIEZO IGNITOR
32	4160.637	SWITCH
33	4160.646	GROMMET
34	4160.639	RIVET POP
35	4162.882	UPPER PLASTIC BASE
36	4161.830	CAPACITOR 2 $\mu$ F
37	4162.659	GAS BURNER